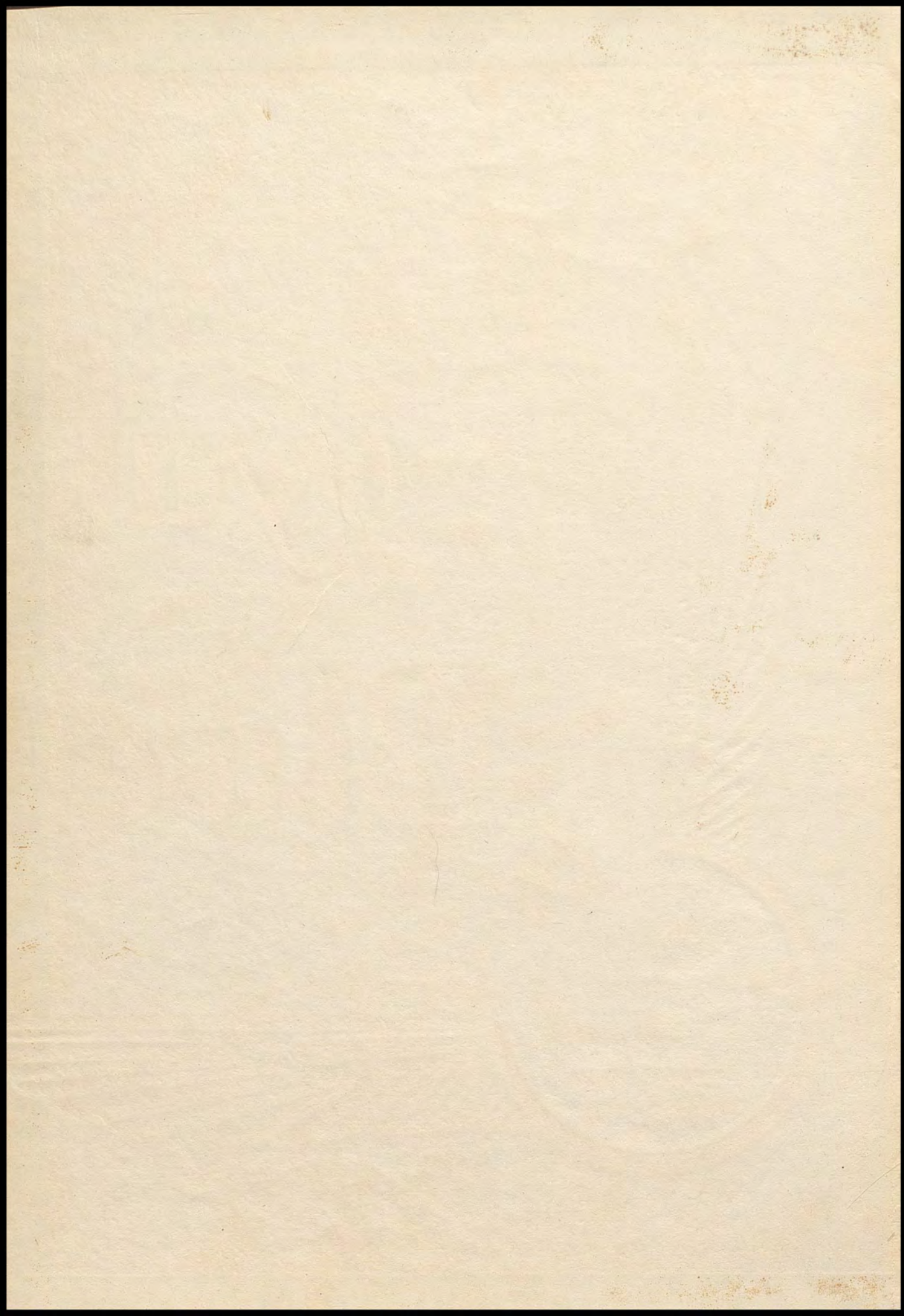


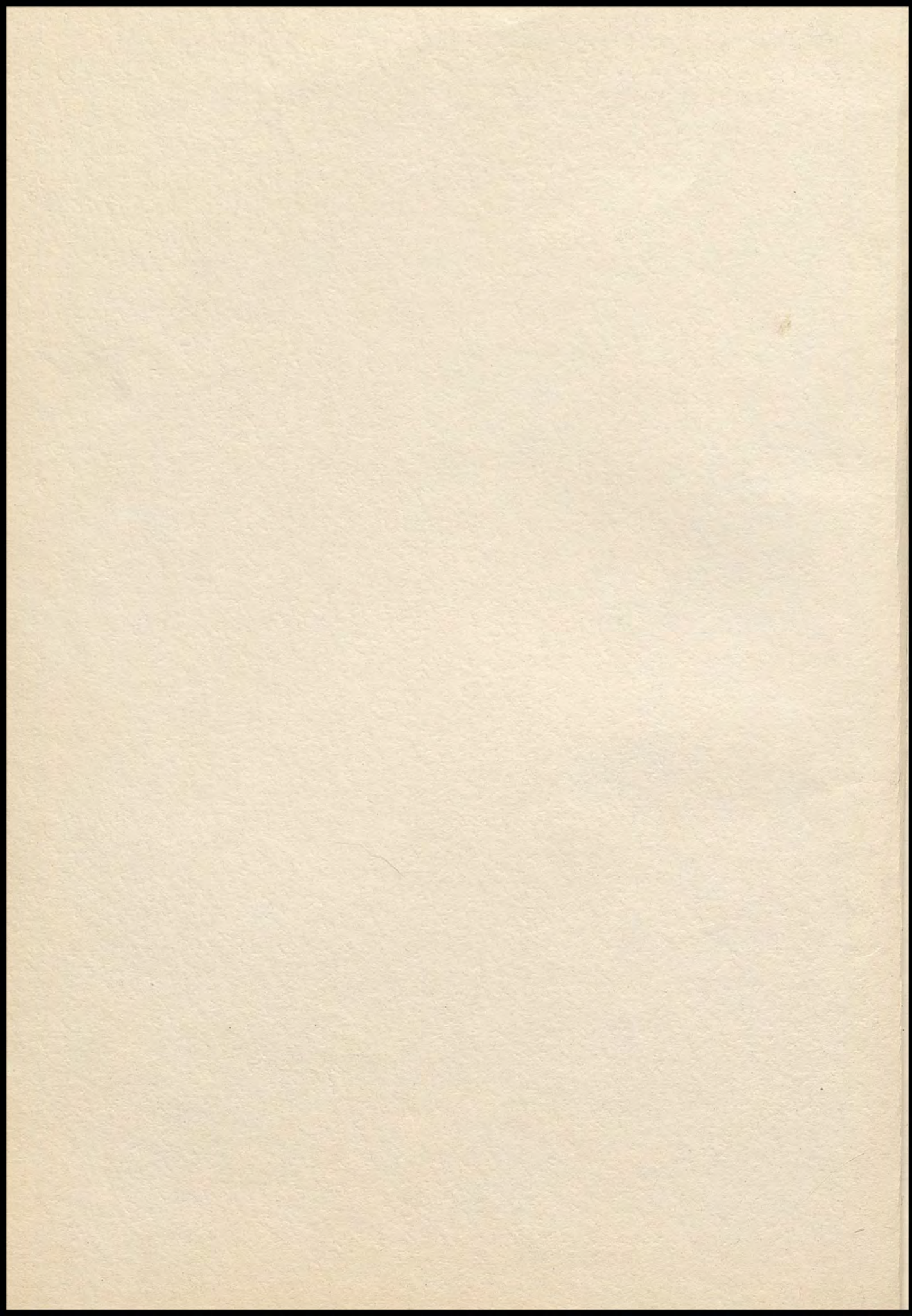
WāHi

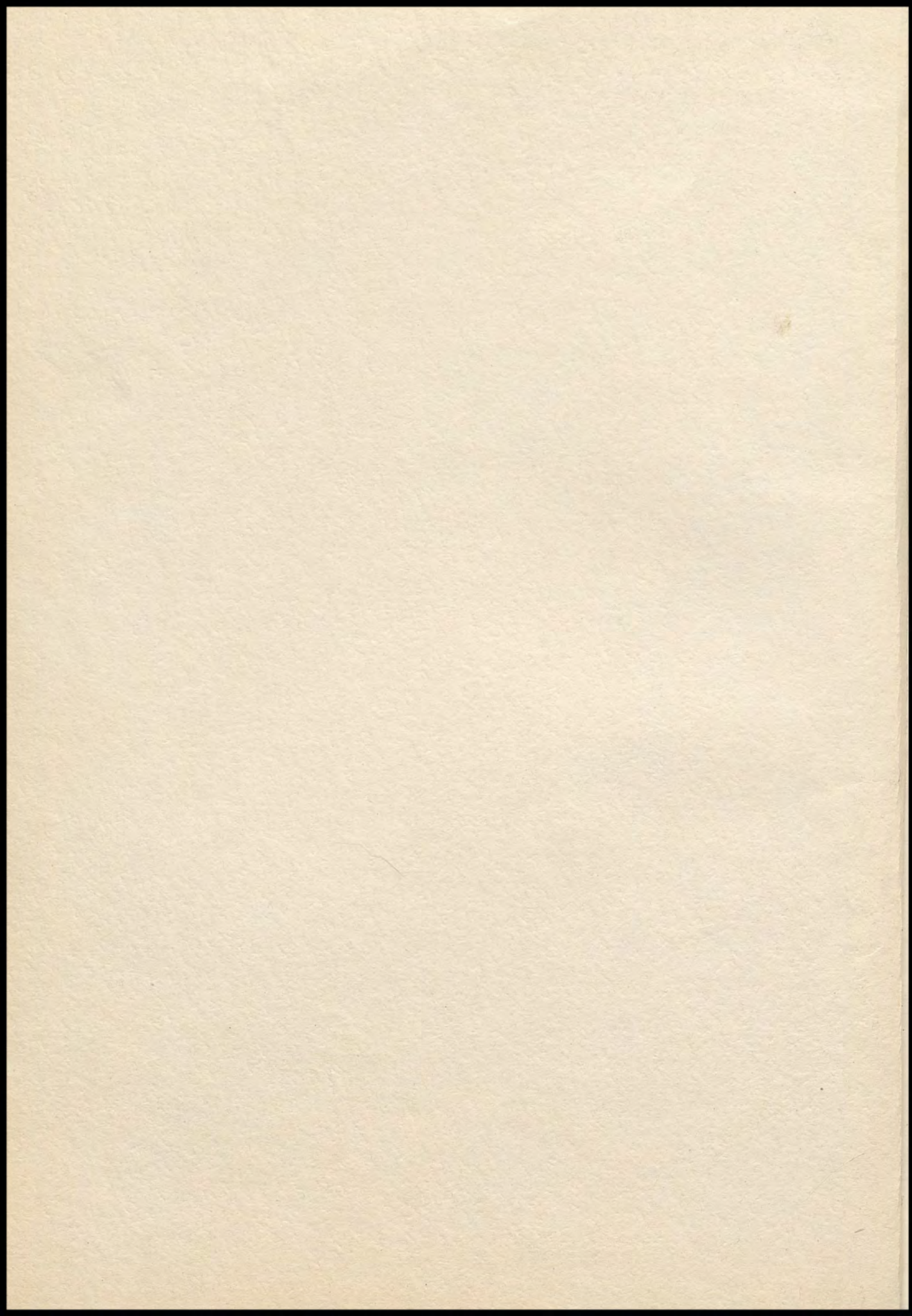
Royal

Blue











In Memoriam

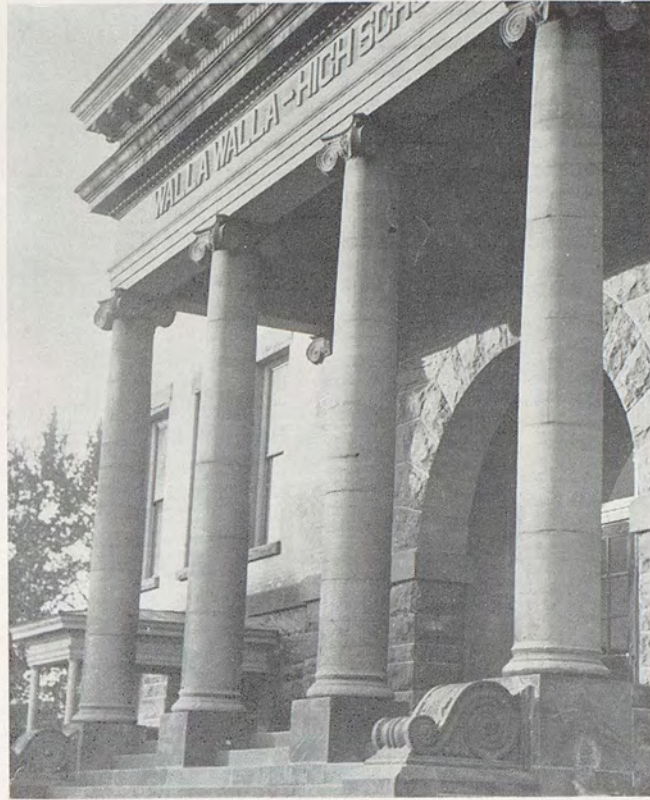


ELSIE GABLE

FRANCIS TRUMBLE

ACKNOWLEDGMENTS

◀ Editor—Betty Jean Waldron
◀ Engraving—Photo-Art Engraving Co.
◀ Printing—Inland Printing Co.
◀ Photography—Vitart Studio



The Royal Blue

MARCUS WHITMAN CENTENNIAL EDITION

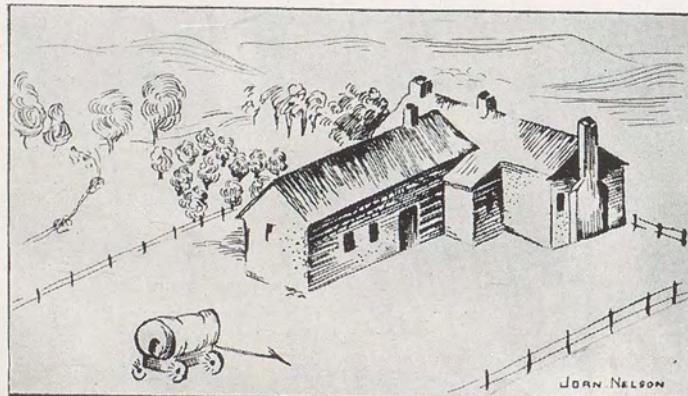
Published by
The Associated Students
WALLA WALLA HIGH SCHOOL
Walla Walla, Washington

1936

WVA -

FOREWORD

This book is an illustrated record of the school year 1935-36 in Wa-Hi. In it you will find pictures of your friends, your teachers, and all the activities which have made this year as memorable to you as the year 1836 was to Marcus Whitman and a little band of pioneers who a hundred years ago started a century of development and progress in the Walla Walla Valley. The staff hopes that this Royal Blue, the pioneer of post-depression Wa-Hi annuals, will mark a new era of highschool publications, and serve always as a memorial to Marcus Whitman and his followers and a memento of your highschool days.



WAILATPU MISSION

-HI

DEDICATION

Time passes on the fleetest of feet and memory turns to the past—to Marcus Whitman, pioneer, and forefather of this, our land. The one-hundred-year period of progress marked by the Whitman Centennial celebration arouses within our hearts a feeling of reverence and gratitude to that brave pioneer spirit that foresaw in the Northwest a future of great promise. The wise and far-seeing precepts of the past challenge the present-day youth to greater and more perfect fulfillment. It is to that spirit of pioneering which inspired Marcus Whitman to explore and tame an unknown region, to that same spirit of progress which inspired the graduating class of 1936 to make possible the publishing of this volume, that we dedicate this book.



NEW GYM



W. M. KERN

LAST WORDS

TO THE SENIORS:

Our intimate and friendly relations, over a period of twelve years, prompts me to send you this brief message as you approach the close of your highschool career and face Commencement.

Over a period of approximately eighteen years you have been served by others and have lived on wealth earned and accumulated by others. This fact, I hope, has not escaped your attention. The bread you ate, the clothing you wore, the house in which you lived, were made by others. You have been educated at public expense: the books you studied, the paper on which you wrote your theme, the pencil with which it was written, were provided by others. Others have worked and saved and provided in order that you might have care and leisure and opportunity.

To you much has been given

Of you much will be expected.

This truth Jesus intended for you.

Sincerely,

W. M. Kern

SUPERINTENDENT

W. A. LACEY



PRINCIPAL'S MESSAGE

After a lapse of several years the Royal Blue is starting again. It is considered so valuable by so many students that sacrifices are made in order that it may again be a feature of the school's life. The enduring pleasure which it gives should prove the wisdom of its revival.

The friendships and associations of the highschool years that influence all later life so profoundly may well be enriched and preserved in the pictures that form the best part of any such book. Visual memories they are, that tie the first of life to the rest, and brighten all.

This book specially honors the Class of 1936, the largest class to graduate from the Walla Walla Highschool. In many ways the class has felt the pinch of the lean years, and it is fitting that it should be instrumental in reviving this publication. May the Royal Blue of '36 serve its pleasant purpose, and may the Class of '36 prosper in service and happiness!

W. A. Lacey
PRINCIPAL



ESTHER BREIHZOLZ
History

HARRISON L. CLARK
Head of Commercial Dept.
Attendance Clerk

DESSIE COX
English

DOLLIE CORN
English

HAROLD DIMICK
Physical Education
Head Coach

JULIANA DRAPER
History

RUTH DUNN
Mathematics

CAPT. E. A. ERICKSON
R. O. T. C.

MYRTLE FALK
English

MARY GARNER
English

MABEL GRAHAM
Commercial

FAY HAMM
Head of English Dept.

ALICE KENYON
Science

BESS KIRK
Mathematics

EDITH KRUEGER
Commercial

LILLIAN LINDNER
English and Latin

Just as the pioneers of yesterday needed leaders to guide them to the new land of opportunity, so we, the pioneering young people of this generation, need leaders to guide us into a new world of opportunity. The faculty of Wa-Hi has successfully guided the classes of this school during the past year.

Miss Martha Young, Dean of Girls, has helped further the progress of the Girls' Federation and has proved herself a true friend to the girls of the student body.

Harry Clark, head of the commercial department and attendance clerk, is also advisor for the Senate Club. Other members who are striving to prepare prospective business executives for their life work are Miss McCormick, Miss Simet, Mrs. Graham, Mr. Minzel, and Miss Kruger. Miss McCormick is advisor for El Adrea. The member of the faculty who has planned this annual and supervised its publication so that you might have pictured illustrations of your highschool days is Miss Simet. Mr. Minzel has conducted a successful intra-mural sport tournament and has also coached tennis and golf.

As head of the mathematics department, Miss Blynn has worked many years teaching geometry, trigonometry, and calculus to students in her department. The Math Club has performed many services for the school under her capable management. Miss Kirk, Mrs. Dunn, advisor for the junior class, and Mr. Emigh, who also teaches the technique of football to would-be freshman football heroes, make up the rest of the teaching staff for this department.

Every student has, sometime during his highschool career, enjoyed listening to the interesting story of the past as related in our history books. Miss Yeomans is supervisor of this department. The Social Science Club is also under her leadership. Miss Breiholz, Miss Draper, advisor for the freshman class, Mr. Austin, Miss Peterson, and Mr. Jacky are the other members who also hold the key to the past. Mr. Jacky supervises the publication of the weekly Wa-Hi Journal and coaches track, too. Miss Peterson is director of Guidance.

The head of the English division is Miss Hamm, who is also advisor for the National Honor Society. Others who teach the language of our fathers, are Miss Corn, Miss Williams, Miss Cox, who has the additional job of conducting a dramatic class. Miss Falk advisor for the sophomore class, Miss

HELEN McCORMICK
Commercial

LUCILLE McINTYRE
Head of Foreign Language Dept

MARVIN MINZEL
Commercial
Intra-Mural Director

SGT. HAROLD MIZONY
Asst. R. O. T. C.



IVY C. PETERSON
Social Science
Guidance Director

JESSE PUCKETT
Girls' Physical Education

GWENDOLYN RAMSEUR
Librarian

PAUL REED
Science



ELSA RINGEL
Cafeteria

BERNICE SIMET
Commercial

C. L. STEELSMITH
Mechanical Drawing

HELEN THUN
Home Relations



WILMA WASSER
German
Social Science

ANNE WUEST
French
Commercial

MARY K. YATES
Science

MARTHA C. YOUNG
Dean of Girls
English



Sutherland, and Miss Young. Miss Garner, substitute for Miss Bickelhaupt, has spent a great deal of time working with the Eh-Kah-Nam contestants.

Miss McIntyre is head of the foreign language department and has the Equites Club under her supervision. Other members of the foreign language department are Miss Lindner, advisor for the Girls' Classical Club, Miss Wuest, advisor for the French Club, and Miss Wasser, the German Club advisor.

Young scientists of tomorrow are instructed by Mr. Tack, head of the science department and instructor in stage-craft, Mr. Reed, senior class advisor, "Polly" Anderson, Miss Yates, and Mrs. Kenyon, advisor for the Science Club. "Polly" also coaches indoor baseball.

When the present Future Farmers of America are successful farmers twenty years from now, they will remember with gratitude and pleasure the man who started them on their chosen occupation—Mr. Lybecker.

One of the new members of the faculty this year was Miss Thun. She has worked diligently in order to build up the home economics department. She also directs the Arts and Crafts Club.

Many students have made use of the opportunity which our school library offers them. Connected with their memory of the book friend to be found here will always be Miss Ramseur, librarian. Likewise many have availed themselves of the opportunity to enjoy the wholesome lunches that Miss Ringel has prepared for them in the cafeteria.

Coach Dimick has turned out many victorious football and basketball teams. He has charge of the boys' physical education classes and the W. W. Club. The girls' physical education classes and sports are supervised by Miss Puckett.

Musical and vocal talent of the school is trained by Mr. Tilley, band and orchestra director, and Miss Idol, boys' and girls' chorus director.

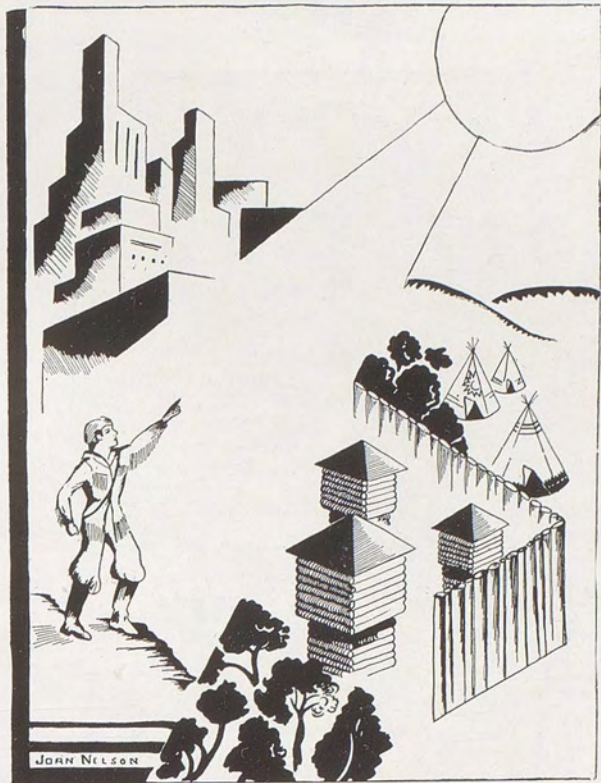
Captain Erickson and Sergeant Mizony have charge of military, the Officers Club, and the Aviation Club. Mr. Steelsmith and Mr. Myers train students in mechanical drawing and industrial arts.

We, the students of Wa-Hi, feel fortunate to be able to spend four years under such competent leaders.



Queen of the Royal Blue

ELVA CHAMBERLAIN



CLASSES



Pickard Dickerson Roecker Raugust Madison Reed Gilliam

SENIOR OFFICERS

First Semester		Second Semester
Bud Dickerson	President	Bud Dickerson
James Pickard	Vice-President	Bud Roecker
Gayle Madison	Secretary	Martha Raugust
Donald Gilliam	Treasurer	Martha Raugust
Mr. Paul Reed	Faculty Advisor	Mr. Paul Reed



SENIORS

The Class of 1936 completes its highschool course with the justly satisfied feeling that it has contributed its share in the development of the Wa-Hi spirit.

It has been outstanding in activities. It contributed ten men to the football team and the first six men to the basketball team. It revealed its talent in the annual Senior Class Play, "The Queen's Husband."

It has been outstanding in scholarship. Thirty-nine of its members belong to the National Honor Society.

It has been true to the spirit of democracy in highschool affairs, by working untiringly to secure full representation for the freshmen in the Legislative Assembly, so that now the freshmen legislators have one vote each instead of one for each homeroom.

It has been true to the spirit of progress. As juniors the Class of '36 helped to restore the Wa-Hi Journal, and this year it has cooperated in restoring the Royal Blue as an annual Wa-Hi publication.

CLASS OF '36 SCHOLARSHIP ROLL

To be eligible for the Senior High Scholarship Roll, members of the class must have maintained an average of B or better for the highschool course, and to have attended Wa-Hi for two years. Twenty-eight Seniors are on this high scholarship list, half of whom are boys and half girls.

Marian Neiswanger, Valedictorian
Ocea Jean Vedder
Sybil Clark
Constance Bryant
Eunice Buddenhagen
Alice Hair
Alice Kendall
Katherine Frank
Delpha Colbert
Betty Waldron
Bernadine Rogers
Helen Deeter
Charlene Jackson
Melba Simmonds

Baker Kennedy, Salutatorian
John Haigh
David McCarroll
James Pickard
John Woiblet
Bob Kenyon
Alfred Middleton
Joe Demaris
Mearle Miller
Arthur Lathrop
John Cates
Robert McCoy
Vernon Lawrence
Buddy Roecker

ⓧ
ⓧ
ⓧ
ⓧ

ⓧ
ⓧ
ⓧ
ⓧ
ⓧ
ⓧ



CLIFFORD ALBRIGHT

AK
MARJORIE ANDERSON
Social Science Club 3-8.



JEANNE APPEGATE
Gimmel Teth 1-6; "What Do You Think?" 6; Legislative Assembly 2; Dramatic Club 1, 2.

TED APPEGATE
Entered from Grant Hi 3; Math Club 3; "Shirtsleeves" 6; Equites Club 6, 7; Vice-Pres. Equites 7; Extemporaneous Speaking 6-8; "Antigone" 6; Royal Scholastic History Contest 6; Legislative Assembly 6; "The Queen's Husband" 8.



AK
JACQUELINE ARBINI

MARY ASHWORTH
Math Club 4-5; Orchestra 2-4; Glee Club 6.



AK
MILDRED AYLWARD
Math Club 4-5; Glee Club 8.

Father Jack
AK
BEE BARRIE
Orchestra 1-6; Sec. Sophomore Class 3; El Adrea 2-8, Pres. 7; Girls' Federation Cabinet 4, 6, 7, 8; Girls' Council 5, Sec. 7, Pres. 8; Conferences 2, 3; Legislative Assembly 1, 3, 7, 8; Student Body Cabinet 7, 8; Student Conference 7; Girls' Trio 7, 8; Girls' Glee Club 7, 8; Royal Blue Staff 8; Wa-Hilarities 8; Tri-State Conference 8.



ELEANORE BATFS
Classical Club 3, 4.

AK
HAROLD BECKEL



MAIDA BELLOWES
Girls' Federation Cabinet 4-8; Battalion Sponsor 3, 4; Gimmel Teth 3-6; Legislative Assembly 7.

AK
ALBERT BENZEL



ESTHER BENZEL *AK*

ROBERTA BINBANDER
Independent Club 5, 6.

BETTY BISHOP

Girls' Council 3, 8; Dramatic Club 4-7, Secretary 7; Legislative Assembly 7; Journal Staff 8; Girls' Cabinet 8; Tri-State Conference 8; Glee Club 1, 2; Royal Blue Staff 8.

ELMER BOND

Entered from LaGrande 3.



JUANITA BOWERS

Gimmel Teth 1-8, Vice President 7, 8; Orchestra 3-6; Band Sponsor 7; Legislative Assembly 8.

HENRY BOWN

Officers Club 7-9; Social Science Club 6, 7; Football 3; Captain Company B 8, 9.

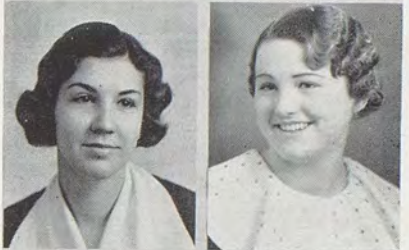


Father Goose
JUNE BRENNAN

Transferred from Los Angeles Hi

ELIZABETH BRIDGHAM

Der Lorelei Verein 4-8, Sec-Treas. 4-8.



ROBERT BRISTOL

Independent Club 3; Journal Staff 7, 8.

our church
LELIA BRUCE

Home Ec Club 1; Independent Club 2-4; Arts and Crafts Club 7, Vice-President 7.



our church
LETHA BRUCE

Home Ec Club 1; Independent Club 2-4; Arts and Crafts Club 7, Sec.-Treas. 7.

CONSTANCE BRYANT

Science Club 3, 4; El Adrea, 5-8; Girls' Cabinet 4, 5, 7, 8; National Honor Society 7, 8, Treas. 7.



JEANNETTE BUCHANAN

Social Science Club 4-6; Math Club 7, 8; Orchestra 1-3.

EUNICE BUDDENHAGEN

Girls' Classical Club 4-9, Sec.-Treas. 5, Sec. 6, Treas. 7, Vice-Pres. 8, Pres. 9; National Honor Society 8, 9, Sec. 8; Legislative Assembly 8; Girls' Council 8; Sponsor Co. C 8, 9; Royal Blue Staff 9.

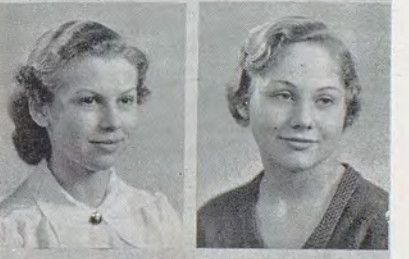


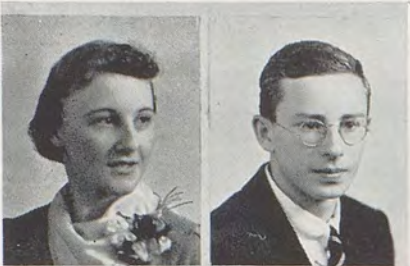
our Neighborhood
ALVINA BUTHERUS

Dramatic Club 3; Legislative Assembly 1.

JEAN BYBEE

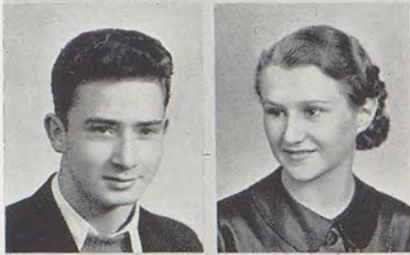
El Adrea 3-8, Secretary 7; Legislative Assembly 1, 3, 5; Girls' Cabinet 3, 7, 8; "Queen's Husband" 8.





EVELYN CALLOWAY
Entered from Holy Names Acad-
emy 3; Home Ec Club 4.

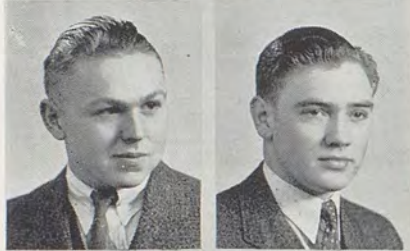
CHARLES CAMERON
Track 8.



GERALD CAMPBELL
Legislative Assembly 2; Rifle
Team 5; Tennis Club 5.

SYBIL CARTER

Ⓢ *Acquaint his Father
Norbert
MSPO*



JOHN CATES
National Honor Society 7, 8; In-
dependent Club 5, 6.

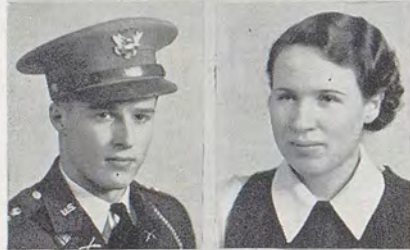
HAROLD CLARK
Entered from Palouse 6.



SYBIL CLARK
Legislative Assembly 1; Dramatic
Club 3, 4; Social Science Club
7; "Shirtsleeves" 6.

DELPHA COLBERT
National Honor Society 7, 8.

Ⓢ *Shops Smoke shop &
Resto owner after
1950*



JOE COLOMBO
Officers Club 7, 8; Senate Club
5-8; Baseball 5, 6, 8; Student
Body Treasurer 7, 8.

ELEANOR CORNELIUS
Classical Club 3, 4; Tennis Club
3, 4; Girls' Council 6; "Rose
Maiden" 5.

** White house &
Crawford family
a relative, where
I was born for
years*



JOHN H. CRAWFORD
Classical Club 3-6; Officers Club
7, 8; Band 1-8; Orchestra 3-8;
Pep Band 3-8; Journal Staff 7-8;
N. W. Orchestra Conference 6.

CAROLYN CROMER
Gimmel Teth 2-8; Legislative As-
sembly 1; Girls' Cabinet 7-8;
Glee Club 7-8; Double Trio 7-8;
"The Queen's Husband" 8; Wa-
Hilarities 8; Student Conference
8.



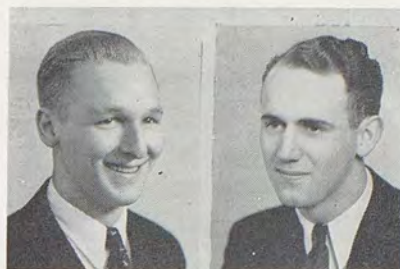
LOUISE CURCIO
Independent Club 4, 6; Wa-Hi
larities 8.

** Father Howard
MSPO*
PAUL DAMMAREL
Entered Wa-Hi 7.

Weird X

EDWARD DAVES
Band-Orchestra 6, 8.

EDWARD DAVIS
Science Club 3; Social Science
Club 4-6.



GRACE DAVIS

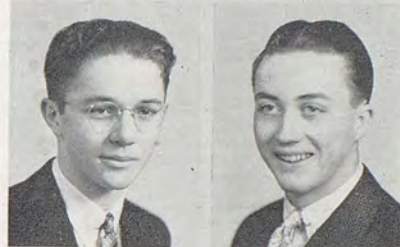
HELEN DEETER
L'Alliance Francaise 5-8; Home Ec
Club 4; National Honor Society
7, 8.



worked for him at Libby's Cannery

JOE DeMARIS
Entered from Dixie 5; National
Honor Society 7, 8.

ROBERT DENTON
Independent Club 3, 4; Rifle
Team 4-6; Legislative Assembly
5; Eh-Kah-Nam Contest 8.



*Brother worked at
Safe-way after
w/war II*

R BUD DICKERSON

Entered from Aberdeen, South
Dakota 4; Equites Club 4-8, Pres.
8; Legislative Assembly 5; Royal
Blue Staff 8; Pres. Senior Class 7,
8; "The Queen's Husband" 8.

ESTELLE DICKERSON
Home Ec Club 1, 2; Orchestra
1-4; L'Alliance Francaise 5-8.



DELORIS DICKINSON
Independent Club 4; Social Sci-
ence Club 5-8.

MILDRED DIGH

Digh Eloc



MILDRED DIXON
Independent Club 5; Home Ec
Club 6.

FERN DOTSON
Girls' Classical Club 3-4.

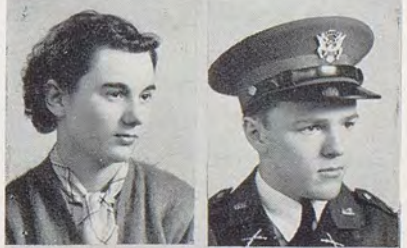


*X Father George
wife*

EVELYN DRENNAN
Girls Classical Club 3; Dramatic
Club 4-7; "Shirtsleeves" 5.

HAROLD DUFF
F. F. A. 1-8; Officers Club 6-8.

*our
church
member*





ELOISE DUNWOODIE
Girls' Classical Club 6-8; Wa-Hilarities 8.

LEONARD EVANS
F. F. A. 6, 7, 8, Pres. 7, 8.

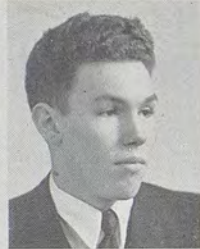


*Farmer
Prescott, Jr.*

* PAUL FARRENS
Football 1, 3, 5, 7; Baseball 4, 6; Track 8; W. W. Club 5-8; Math Club 3-5; Legislative Assembly 2, 4, 6.

of Jacky & Fiedlers

DELBERT FIEDLER
Social Science 3, 4; Wa-Hilarities 8.



MERLIN FLEMING
Math Club 4; Band 3-7.

MARTYN FOGARTY
Legislative Assembly 1; Football 1, 3; Social Science Club 3-5.

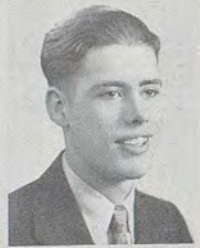


Ⓛ Related to Sol Frank who had Melrose Mkt when we lived on Melrose 1950-55

Ⓛ KATHERINE FRANK
Legislative Assembly 1; Social Science Club 3; Der Lorelei Verein 4-8, President 5, 7, 8; National Honor Society 7, 8.

Ⓛ Sol started playing golf last year

Ⓛ WILLIAM FRANK



Ⓛ Knew them

Ⓛ DORIS FREEPONS
Arts and Crafts Club 6-8; Glee Club 8.

Ⓛ RICHARD FREEPONS



CLARENCE FRERE
Officers Club 6, 7.

ILKA FRIESKE
Independent Club 4, 5.



ROBERT FULTON
Independent Club 7.

BOB GANDERS
Industrial Arts Club 2-4; Aviation Club 6-9, President 8.

Paul's sister

MARGARET GARLAND

Girls' Council 3-5; El Adrea 5-8.
Treasurer 6; Girls' Federation
Vice-Pres. 8.

WILLIAM GENSEL

Math Club 4-8; W. W. Club 6-8;
Track 4, 6, 8.



DONALD GILLIAM

Legislative Assembly 6; Treasurer
Senior Class 7; Radio Club 3, 4;
Journal Staff 7, 8.

BETTY GLAFKE

Gimmel Teth 3-4; Operetta 1;
Legislative Assembly 3, 6; Girls'
Cabinet 7; Student Cabinet 8.

*Daughter of Ralph S.
Olympian Beer etc*



*MARRIED MARK
HOWER, I ASKED
FOR HER WHEN I WAS IN
GRADE SCHOOL*

GILBERT LEIGHTON GLEIM

GILBERT GOODMAN

Officers Club 6, 7.



*our mother a few
years ago*

*became an
Alcoholic
Real Bad*

HAROLD GRADWOHL

W. W. Club 3-8; Senate Club 4-
7; Football 3, 5, 7.

FLORENCE GREWELL

*Mother was very Rich knew her
at WCC when I
worked there*



VIRGINIA GROTE

Girls Cabinet 2; Gimmel Teth
4-8; "Antigone" 5; Legislative
Assembly 7; Royal Blue Staff 7;
National Honor Society 8.

GEORGE M. GWINN

Industrial Arts 1-4; Officers Club
7, 8; W. W. Club 6-8; Legisla-
tive Assembly 7; Rifle Team 5-8;
Football 3, 5, 7; Baseball 4, 6;
Track 8; Lacey R. O. T. C. Tro-
phy 6.

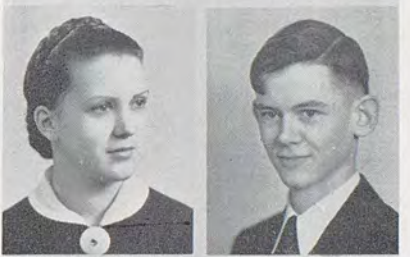


SUSAN HAHN

Entered from St. Helens Hall,
Portland, Ore. 2; Math Club 2;
El Adrea 6.

JOHN HAIGH

Math Club 3-8; Band 3-8; Orches-
tra 3-8; Officers Club 6, 8; Na-
tional Honor Society 6-8; Legis-
lative Assembly 7, 8.



Mine farmer

ALICE HAIR

Entered from Chelan Hi 5; Dra-
matic Club 5, 6; El Adrea 7, 8;
Girls' Cabinet; Treasurer of Girl's
Federation 8; Associate Editor
Journal 6; Royal Blue Staff 8;
Publicity Manager Queen's Hus-
band 8; National Honor Society
8.

JACK HALLMARK

Football 1, 2; Band 2-8; Orches-
tra 7, 8; L'Alliance Francaise
3-6.





NORMA HALLMARK
Independent Club 1, 2; L'Alliance Francaise 3 4; Der Lorelei Vereir. 5; Battalion Sponsor 5, 6.

*Moved to So Grand
Safeway Mgr*

CLAUDE HAND
Social Science Club 5, 6; Equites Club 7; Legislative Assembly 5; Entered from Lewiston Hi 1.



JANICE HARVEY
Tri-State Conference 8; Gimmel Teth 6-8.

PHYLLIS ELAINE HARVEY
Entered from Precott Hi 6; El Adrea 6-8; "Cathedral Doors" 7; Girls' Council 8; Wa-Hilarities 8.

Parent's ride farmer



ERILDEAN HASTINGS
Legislative Assembly 5; Girls' Council 6; Wa-Hilarities 8.

FERN HATHAWAY



MAXINE HEALY

Service club

RICHARD HENDRICKS
Tennis Club 3; Dramatics 4, 5; Senate 7, 8; Officers Club 7, 8; Yell Staff 2-7; Yell King 4, 5; Journal Staff 6-8; Cabinet 7, 8; Legislative Assembly 5, 6; Student Leader and Journal Convention 7; Royal-Blue Staff.



CATHERINE HILBERT
Girls' Council 1; Legislative Assembly 5, 6; Girls' Classical Club 4, 5; Glee Club 3, 4.

BERNARD HILL
Rifle Team 8.



DOROTHY HOLM
Entered from Lewis and Clark 6.

ADDIE HONN



ELVIN HOPPER
F. F. A. 5, 6, Secretary 5, 6; Reporter 7, 8; Potato Judging Team 5, 6.

BONNIE HUNGATE
Entered from Havermale Jr. Hi; Spokane, Wash. 3; Orchestra 3, 4; L'Alliance Francaise 5-8; Glee Club 6.

MARIANNE HUTCHESON

Transferred from St. Vincent Academy 3; Home Ec Club 5, 6; Science Club 8.

BILL E. JACKSON

Transferred from Dayton High 3; Captain Co. C; Aviation Club 5, 6, Vice-Pres.

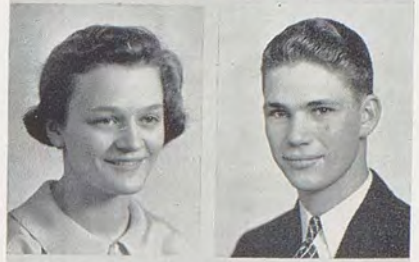


CHARLENE JACKSON

Entered from Mac-Hi 6; Social Science Club 6-8, President 7; Radio Plays 7.

ROSCOE JOHNSON

Legislative Assembly 4, 5; Rifle Team 5-8.

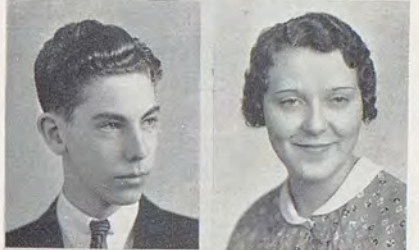


CLAUDE JONES

Legislative Assembly 2, 5; Math Club 3-6; Equites Club 7, 8.

JUNE JOSLIN

Arts and Crafts Club 7, 8.



father W.W. JB

ROBERT CLAY JOSLIN

W. W. Club 3-8; Senate Club 3-8; Legislative Assembly 1, 8.

BUD KELLEY

Officers Club 5, 8; Dramatic Club 1; Student Cabinet 5, 6; Legislative Assembly 8; Journal Staff 7; Battalion Major 7, 8; Stage Crew 1, 4.

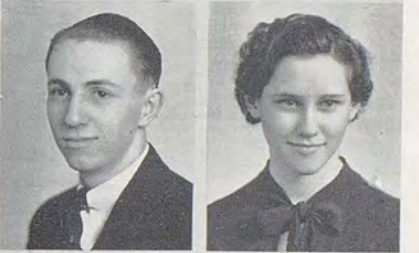


MILFORD KELLOGG

Legislative Assembly 1, 2, 5, 6; Science Club 5-9; Eh-Kah-Nam Contest 7; Extemporaneous Speaking 7; Student Cabinet 8, 9; Royal Blue Staff 9; Student Leader Conference 9; Costumes Queen's Husband 9.

ALICE KENDALL

Girls' Council 1; L'Alliance Francaise 4-9, President 6; National Honor Society 8, 9.



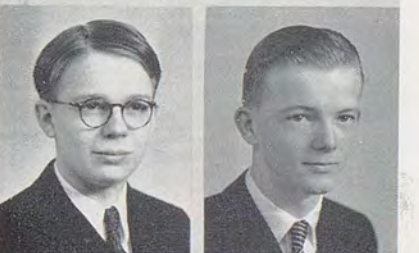
Very Popular in School

BAKER KENNEDY

Math Club 3-8; National Honor Society 6-8; Officers Club 7, 8; Band 3-8; Orchestra 3-8; Pep Band 6-8; Chemistry Team 6; Northwest High School Orchestra; Extemporaneous Contest 8; Salutarian.

BOB KENYON

Editor Wa-Hi Journal 7, 8; Math Club 3-8, V.-Pres. 6, Pres. 7; National Honor Society 6-8, Pres. 7; Legislative Assembly 1, 3, 5; History Team 5, 6; Valley Forge Award 5; Student Court 1-7; Whitman Extemporaneous Contest Winner; Eh-Kah-Nam Winner 8; Wa-Hilarities 8.

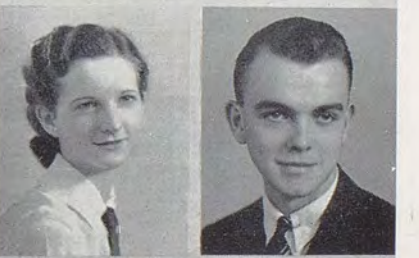


HAROLDENE KINNEY

Arts and Crafts Club 7, 8.

GEORGE KNAPP

Legislative Assembly 1, 2, 4, 7; Vice-Chairman 7; Dramatic Club 3-5; "The Queen's Husband" 8; Track 3, 5, 7; Basketball Manager 5; Glee Club 7.





MILDRED KNOUF
Entered from Glendale, Ariz. 6.

ARTHUR LATHROP
Math Club 3-6; Chemistry Team
6; National Honor Society 7, 8.



VERNON LAWRENCE
Dramatic Club 4-7; National Honor Society 7, 8; Vice-Pres. 8; Legislative Assembly 7; "The Queen's Husband" 8; Glee Club 7, 8; Wa-Hilarities 8; Royal Blue Staff 8.

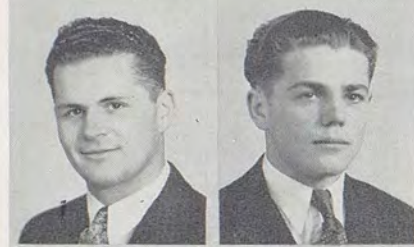
GLADYS LEE
Gimmel Teth 7, 8; Girls' Cabinet 5, 7; Legislative Assembly 3, 5.



JOE LEONE
W. W. Club 6-8; Industrial Arts Club 3, 4; Junior Mechanics 5; Football 5, 7.

FLORENCE LETTERER
Announcement Committee 8; Girls' Tennis Tournament 4, 6; Champion 4.

*W/Good year store and m/w his garage
became high in rank in war II*



HARRY LINKER
Football 1-8; Track 6, 8; Rifle Team 6, 8; W. W. Club 3-8;

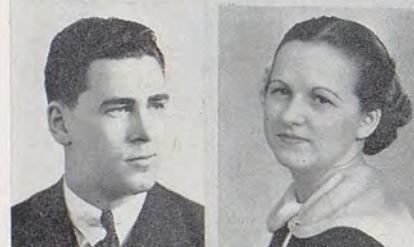
HARRY LITZENBERGER

know very well, He managed state Liquor store, Retired, Play Golf just about every day



ANDREW LLOYD
Dramatic Club 4-7; Rifle Team 4-6; Legislative Assembly 5, 8.

ELETH LOEHR
Dramatic Club 3, 4; Legislative Assembly 8.



JACK LONEY
Dramatic Club 3, 4; Officers Club 5, 6, Capt. 6; Operetta 3; Aviation Club 6-8, President; Glee Club 2, 3; "Shirtsleeves" 6; Journal Staff 8.

JUNE LONEY
El Adrea 3-5; President of Girls' Council 7; Reading Clerk 7; Girl's Council 5, 6; Girls' Federation Convention 4; Journal Staff 7, 8; Legislative Assembly 7.



BETTY LUCAS
Entered from Bellingham 6.

JOHN LUSK
Chemistry Team 6; Stock and Potato Judging Teams 7; F. F. A. 4-8.

Gotta quit, getting Writers @ramps 11:20

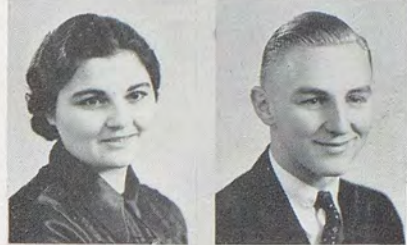
FLETA LYDAY

GAYLE E. MADISON
Legislative Assembly 1, 5, 7; Pres. Junior Class 6; Equites Club 7, 8; Rifle Team 7, 8; Sec. Senior Class 7; "The Queen's Husband" 8; Eh-Kah-Nam Contest 8; Journal Staff 7, 8; National Honor Society 8.



KATHRYN MANTES
L'Alliance Francaise.

ALLEN MATTHEWS
Science Club 5, 6; Officers Club 8, 9; Radio Club 5; Legislative Assembly 8; Rifle Team 6-9; Stage Crew 2, 3; Royal Blue Staff.



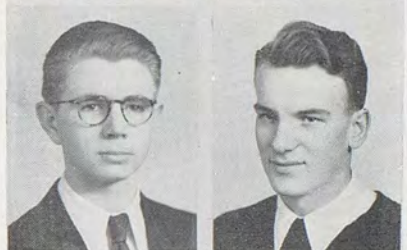
DAVID McCARROLL
Legislative Assembly 3; "Shirt-sleeves" 6; Tennis Club 3, 4; Dramatic Club 5, 6; Tennis Team 6; Chief Justice, Student Court 7, 8; Student Cabinet 7, 8; "The Queen's Husband" 8; Royal Blue Staff 8; School History Contest 6; National Honor Society 6-8; Ex-temporaneous Contest 6; Eh-Kah-Nam Contest 6; Student Leaders Conference 8.

OWEN McCOY
Entered from Centralia 4.



ROBERT McCOY
Math Club 7-8; National Honor Society 7, 8; Secretary 8; Royal Blue Staff 8.

ROBERT McDANIEL
Football 1, 3, 5, 7; W. W. Club 7, 8; Independent Club 4.



EVA MAE McEVOY
Entered from Yakima Hi 4; Sponsor 7.

EFFIE McGILVRAY



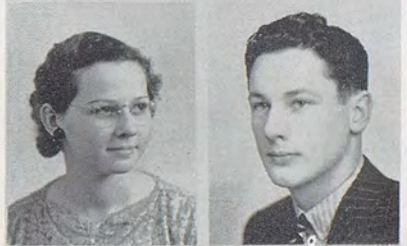
MAX McGUIRE
Tennis Club 4, 6.

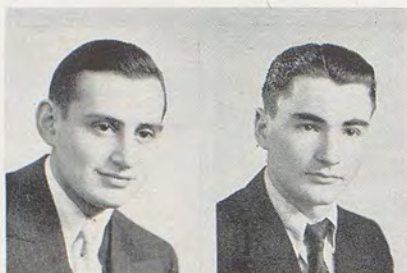
MARY McINROE
Independent Club 3-6.



FRANCES McLACHLAN
Independent Club 3.

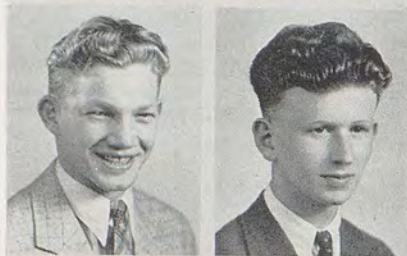
+ WAYNE McLEOD
Senate Club 3-7; Officers Club 3, 7; Operetta 4; Senate Club Play 5; Dramatics Club 2; Capt. Adj. R. O. T. C. 5.





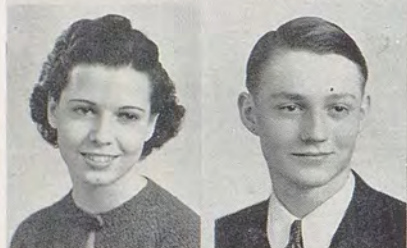
JACK MEUTER
Band 1-6.

ALFRED MIDDLETON
Basketball 1, 2; National Honor Society 7, 8.



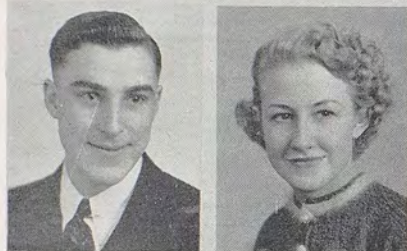
MEARLE MILLER
Basketball 3, 5, 7, 9; Football 4, 6, 8; Track 3, 5, 7, 9; W. W. Club 3-9; National Honor Society 5-9; Commercial Arts Club 5-7; President Student Body 8, 9; Golf Champion 5, 8; Royal Blue Staff 9.

WILLIAM MILLER
National Honor Society 8.



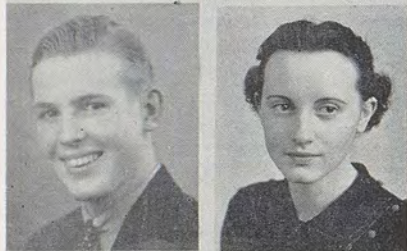
VIRGINIA MONTGOMERY
Girls' Council 1; El Adrea 3-8, Treasurer 8.

BRUCE MOORE
Entered from Pendleton Hi 8.



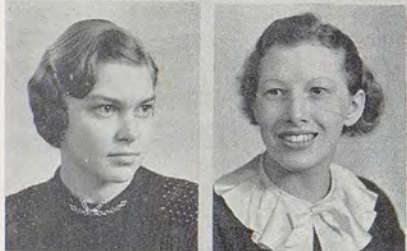
GEORGE R. MOORE
Band 1-8; Orchestra 5-8; Pep Band 3, 6, 7, 8; Legislative Assembly 3.

VIRGINIA LEE MOREMEN
Gimmel Teth 4-6.



BOB MYERS
Entered from Toppenish Hi 8.

JEAN NASCIMENTO
Gimmel Teth 4-8, Vice-Pres. Girls' Federation 7; Girls' Cabinet 5, 7, 8; Girls' Council 7; Legislative Assembly 3, 4, 5, 7; National Honor Society 8; Royal Blue Staff 8.



MARION NEISWANGER
Girls' Classical Club 3, 4; Social Science Club 7, 8; National Honor Society 7, 8; Valedictorian.

GERTRUDE NELSON
Entered from St. Vincent Academy 3.



JOAN NELSON
Gimmel Teth 3-8; Girls' Cabinet 6, 7; "Antigone" 7; Vice-President Sophomore Class 3; Royal Blue Staff 8, Costumes Queen's Husband 8; Wa-Hilarities 4.

RACHEL OSWALD

*my
Marilyn Oswald*

CORLEEN OVERBY
El Adrea Club 5-8, Vice-President
7, Secretary 8.

*Went to school w/ my
2 Brothers*

FRED OWENS
Aviation Club 5, 6; Officers Club
7, 8; Captain Company C 8; Glee
Club 8.

HELEN PAQUIN
El Adrea 5-8; Girls' Cabinet 8.

Don't Les Brothers

GENE PARSONS
Social Science Club 3, 4, Vice-
President 3, Sec.-Treas. 4; Avia-
tion Club 5, 6; Officers Club 7,
8, Vice-President 8; Rifle Team
3-8; Legislative Assembly 3, 5, 7,
8; R. O. T. C. Major 7, 8; Wa-
Hilarities 4.

JOE PAUL
Independent Club 5, 6; Der Lore-
lei verein Club 7, 8; Officers
Club 7, 8.

JIM PEARSON
Entered from Benkelman, Neb. 7.

FRANCES PENFIELD
Arts and Crafts Club 8.

*To School
Went w/ Brother*

LaVON PFAFFLE
Math Club 7, 8.

JAMES ARTHUR PICKARD
National Honor Society 7, 8,
President 8; L'Alliance Francaise
Club 4, 5, Sec.-Treas. 5; Vice-
Pres. Senior Class 7; "The Queen's
Husband" 8; Legislative Assem-
bly 1, 8.

father Ralph

DON RADER
Dramatic Club 3-6; Industrial
Arts Club 1, 2; Student Cabinet
7, 8; Legislative Assembly 4, 6;
Band 2-4.

MARTHA RAUGUST
Dramatic Club 5; El Adrea 6-8,
Treasurer 7; Glee Club 7, 8; Leg-
islative Assembly 7; Regimental
Sponsor 7, 8; Girls' Cabinet 7,
8; Girls' Double Trio 7, 8; Girls'
Council Pres. 8; "The Queen's
Husband" 8; Senior Class Sec-
-Treas. 8; Wa-Hilarities 8; Com-
mencement Committee 8.

*Chuck worked for his
Brother*

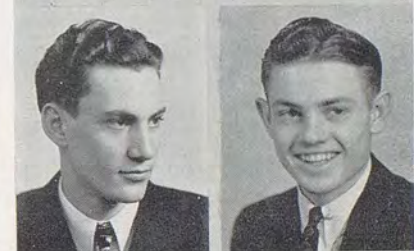
STANLEY RAY
Entered from Waitsburg Hi 3.

*father the main Farmer
Rich*

TREMAYNE REA
F. F. A. 1-8; Stock Judging 7;
Officers Club 7.

*Melcher/RAY
Machinery*

BETTY REED





CARMA REID
Legislative Assembly 5.

CAROL REID
Home Ec Club 3, Sec.-Treas 3.



Brother Painter Vic
ROSE LEE REISWIG

RUTH REITER
Der Lorelei Verein Club 3, 4;
"Rose Maiden" 3; Wa-Hilarities
4, 8; Girls' Double Trio 7, 8;
Glee Club 7, 8.



RAYMOND RIFE
Entered from Lebam High 6.

ORVAL J. RIMBEY
Independent Club 3-5.



? Haughn ? (NO)
GOLDIE B. RING
Social Science Club 5.

LOYD RITTENHOUSE
F. F. A. 3-8.



Ended up in service career Full Col
FREDERICK C. ROECKER, Jr.
Equites Club 3-8, Vice-Pres. 5,
Pres. 7; Officers Club 7, 8, Pres.
7, 8; R. O. T. C. Major 7, 8;
Outstanding Cadet R. O. T. C.
5, 6; Vice-Pres. Junior Class 6;
Vice-Pres. Senior Class 8; Royal
Blue Staff 8; National Honor So-
ciety 8.

BERNADINE ROGERS
Girls' Council; Girls' Classical
Club 3-6, President 5, 6; El
Adrea 7, 8; National Honor So-
ciety 7, 8; "The Queen's Hus-
band" 8; Student Court 5-8.



FRANCE ROGERS
Senate Club 3-7.

LEILA GARNETHA RULAFORD
Girls' Council 1; Dramatic Club
3-6; "Shirtsleeves" 5; El Adrea
8; Royal Blue Staff 8; National
Honor Society 8.



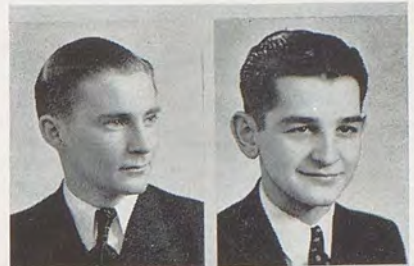
BETTYE RUTLEDGE
Entered from Weiser, Idaho 7;
Legislative Assembly 7; L'Alliance
Francaise Club 7, 8, Sec.-Treas.
7, 8; Regimental Sponsor 7, 8.

Went to school w/ Brother
GERTRUDE SAMS
Arts and Crafts Club, Sec.-Treas.
8.

From my neighborhood

JOHN SCHMIDT
"Shirtsleeves" 6; Eh-Kah-Nam Contest 5; Whitman Contest 6, 8.

MARTIN L. SCHMIDT



ELMA SCOTT
Entered from Okanogan High 7. Social Science Club 7.

W/ her brother

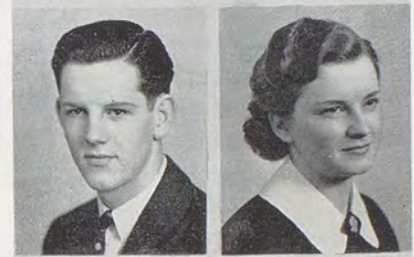
GUSSIE SCHWAB
Girls' Classical Club 4-8.



ROBERT DOUGLAS SHAW
Baseball 4, 6; Math Club 7, 8; W. W. Club 4-8; Cabinet 7, 8; Legislative Assembly 7, 8.

Mill Creek Farmers

LOIS SHEMWELL
Gimmel Teth 3-8, President 7, 8; Treasurer Girls' Federation 7; Girls' Cabinet 4; Girls' Council 7; Sponsor Co. D 7, 8; Legislative Assembly 8.



MELBA SIMMONDS
Entered from Washington High at Kellogg, Idaho 3; Social Science Club; Girls Classical Club.

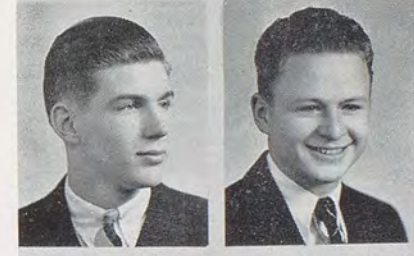
NORENE SLATER
Entered from Touchet High 7; Wa-Hilarities 8.



HARLEY SMITH
Social Science Club 3, 4, President 4; Varsity Basketball 7, 8; W. W. Club 8.

"Bud"

WILBUR SPORLEDER
Track 6; F. F. A. 3, 4.

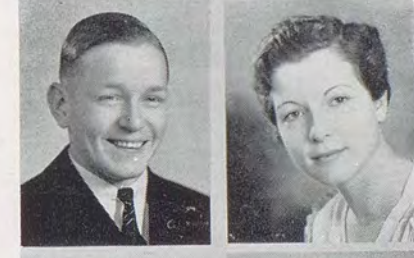


Stewart's Cleaners

WILLIAM F. STEWART
Football 2, 4, 5, 7; W. W. Club 5-8; Aviation Club 3, 4.

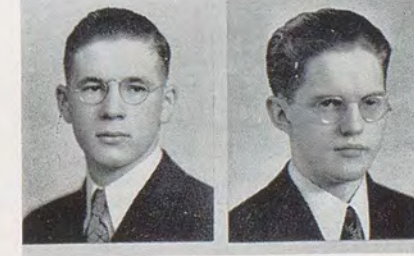
married Marge

DOROTHY STONE



WILLIAM STRUTHERS
Entered from Lincoln High at Jersey City, N. J. 6; Football 6, 8; Math Club 6, 7.

GEORGE SUTHERLAND
Legislative Assembly 1, 3, 5, 8; Band 4-8; Tennis Club 3; Equites Club 4-8; "Shirtsleeves" 6; Journal Staff 6-8; "The Queen's Husband" 8.





ROBERT THOMAS TALBOT
Math Club 7, 8.



*Play golf with her
Brother @ UTIS*

VIRGINIA ALETHA TARWATER
Social Science Club 5.



FRED TESCH, Jr.
Entered from Hillsboro High at Hillsboro, Oregon 7; Senate Club 8.



JUNE THOMPSON
Entered from Adams High at Adams, Oregon 5; Gimmel Teth 5-8; Girls' Cabinet 6; Girls' Council 5, 8.



MARGARET TOMPKINS
Entered from Ritzville High 5; Orchestra 5-8; Glee Club 7, 8.



with his brother

RICHARD TORREY
Industrial Arts Club 1, 2; Commercial Arts Club 3, 4; Math Club 7, 8.



?

DEAN VAN DONGE
Football 1-8; F. F. A. 1-8; W. W. Club 5-8.



OCEA JEAN VEDDER
National Honor Society 6-8; Math Club 6-8; Science Club 3-5; Announcement Committee 7; Chemistry Team 6.



?

ROBERT E. VOLLENDORFF
Senate Club 4-8; Legislative Assembly 1, 8; Recording Clerk 7; Reading Clerk 8; Tennis Team 7; Rifle Team 7.



?

WILLIAM C. VOLLENDORFF
Basketball 1, 2; Senate Club 3-8; Treasurer, Vice-President 8; Journal Staff 7; "The Queen's Husband" 8; Royal Blue Staff 8; Legislative Assembly 3-6.



EVA VRATOS
L'Alliance Francaise Club 5, 6.



ADELINE WAGNER
Entered from Richland 3; Der Lorelei Verein 3-8.



went with her sister

BETTY JEAN WALDRON
El Adrea 3-8; Pres. of Girls' Federation 7; Girls' Cabinet 5, 6; Announcement Committee 8; National Honor Society 7, 8; Sponsor Co. B 7, 8; Editor of Royal Blue 8; Legislative Assembly 5; Wa-Hilarities 8.



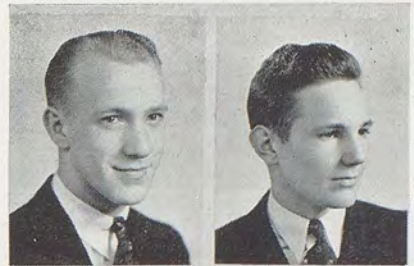
MARIGENE WALKER
Entered from Longview High 5; Gimmel Teth 5-8; Girls' Council 6; Girls' Cabinet 7; Orchestra 7, 8.

EDWARD WATSON

Legislative Assembly 2, 3; Officers Club 7, 8, Treasurer 8.

PAUL WEBB, Jr.

F. F. A. Club 1-4; Sec. of Student Body 7, 8; Dramatic Club 5; Senate Club 6-8, Treasurer 7, 8; Legislative Assembly 1, 4; Cabinet 7, 8; W. W. Club 8; Basketball 8.



MERRIAM WEBSTER

Social Science Club 4-8, Vice President 6, 7.

WILLIAM WELCH

Band; Orchestra.



AVO JANE WETHERELL

El Adrea 8; Operetta 2; Dramatic Club 3-7; Quartet 3, 4; Legislative Assembly 5, 6; Wa-Hilarities 8; Glee Club 8; Royal Blue Staff 8.

SHIRLEY CLAIRE WHITTINGTON

Independent Club 3, 4; Social Science Club 8.



DOROTHY WILLIAMS

Gimmel Teth 3-8; Legislative Assembly 2, 4, 5; Girls' Cabinet 5; Vice-President 6; Student Cabinet 7, 8.

MARY LOUISE WILLIAMS

Entered from University High, Los Angeles 3.



JOHNNY WOIBLET

Math Club 3-8; Officers Club 7, 8; National Honor Society 7, 8; Legislative Assembly 1, 2.

VIVIEN WOOTON

Girls' Council 3; Social Science Club 4; Boys' Glee Club Accompanist 7, 8.



CARL YOCUM

Senate Club 7, 8; Legislative Assembly 4, 6; Pres. Sophomore Class 3, 4; Yell Staff 3, 4; Yell King 5, 6; Student Cabinet 7, 8; "The Queen's Husband" 8; Glee Club 7; Wa-Hilarities 8; Student Leaders' Conference 7.

NORMA YORK

Entered from Chico High, Chico, California 7.

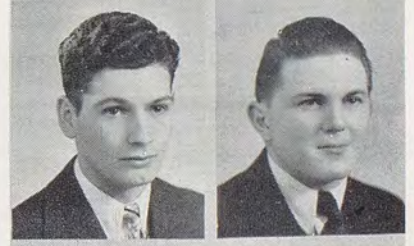


HARRY ZIER

Vice-President Student Body 7, 8; W. W. Club 5-8, President 7, 8; Senate Club 5-8; Track 5, 7, 8; Basketball 6, 8; Football 8.

ELMER CORKRUM

Der Lorelei Verein.



*my neighborhood
Zier at moon accounting*

Rich Farmer



DAVID BRYANT
Track 8; W. W. Club 8; Senate
Club 4-8.



MARGARET GUY
Entered from Milwaukee, Ore. 5.



DON PHILLIPS
Legislative Assembly 1, 3, Inde-
pendent Club 5, 6; Journal Staff
7, 8.



*W/with brother
to school*

FAITH HOLDERMAN
"Rose Maiden" 3; Glee Club 3;
Girls' Classical Club 3-6; Nation-
al Honor Society 7, 8.



MARY RINGEL
Operetta 1; Arts and Crafts Club
7, President 7; Wa-Hilarities 8.



ALTHA TURNER



DOROTHY WHETSEL
Independent Club 3, 4.



*father well to do
in surname man
also customer*

MARJORIE TILLOTSON
Entered from Mac-Hi 7; Social
Science Club 7, 8.



EUGENE SHARP
Aviation Club 3-8; Journal Staff
6-8; Royal Blue Staff 8.



JACK SCHELL
Legislative Assembly 1, 8; F. F. A.
Club 3-8; Band 3-8.

*Brother
Charles Prescott, WY*



WADE BERGEVIN
Senate Club 8; F. F. A. 7.

*father
Rich Farmer*

CAMERA SHY GRADUATES

- Tom Williams ✓
- Marian Barclay ✓
- Robert Burrows ✓
- David Freeman ✓
- Ellen May Hartshorn ✓
- Mildred Jessup ✓
- Royle Lay ✓

- Helen Rohmer
- Roberta Thompson
- Juanita Wells
- Norman Anderson
- Doris Barney
- Harold Bowers
- Mervin Duffy

- Melvin Grange
- Lewis W. Healy
- Evelyn Jones
- Lorene Marshall
- Bud Rogers
- Dale Schiffman
- Glen Webb

*x married to Higgins of
worked at
Baker Boyer
w/with his
Brother George
who passed away
15 years ago*

Part x Owner 9th St & Chestnut
Grocery Store



Row 1—Marie Harding, Helen Schiffman, Elsie May Thomas, Natalie Nascimento, Willabelle Torrey, Ethel Weaver
Row 2—Howard Henderson, Ruth Archer, Hazel Shephard, Anne Schiffrer, Ilene Smootz, Ruth Walker, George Maestretti
Row 3—Earl Knobel, Joe Ferris, Chester Matthews, John Mullins, Albert Baehr, Harold Maher, Wayne Johnston
Row 4—Bob Zaring, Dale Dunning, Bob Fanning, John Tempny

Rich Prescott Farmer

Brother "Robert" woman's W
man

Viggo Carpende Still see him 90's
his son owns Electronic Shop
on East Broadway

Should Be "Gerald Maher" Lived Next-
door to us on Malcolm St
12 B'S
House mover just as his Dad did

Zaring
Insurance

The 12 B's are preparing for the last lap of their journey through highschool. Though small, this class has contributed its share to athletics through Earl Knobel in football and Fred Onstot, William Weber, and Joe Bonner in basketball. It has a good representation in the National Honor Society, the Journal staff, and other activities.

First Row: Armstrong, J. Bond, Bruer, Brown, Bagnall, Buroker, Barney, Chamberlain, Baker, Alcorn, Ashworth, Ball,
 Second Row: O. Bond, C. Beale, Adams, Aden, Bendix, Barbee, Bayne, Beeson, Amen.
 Third Row: D. Beale, Brown, Buerstatte, Anderson, Cram, Bogart, Benzel, Bach-told, Alderman, Barnes.



First Row: R. Davis, Flaiz, Esmieu, Fiedler, Dryden, Durand, Emerson, Cates, Eifert, Cowan, Cochran,
 Second Row: Davin, G. Davis, E. Dumm-ler, DeSmet, E. Davis, B. J. Culver, Dessen, Davies, Durham, G. Clark, Dunning.
 Third Row: Drumheller, Dix, Doud, Daves, Crimmins, Cornelius, D. Evans, Cham-bers, Dippel, Demaris.
 Fourth Row: O. Evans, Dalton, Douglas, F. Davis, Cochran, Cauvel.



THE JUNIOR CLASS

The junior class has just passed the third milestone in its highschool career and is looking forward to the senior year.

During the last year juniors have been well represented in all school activities. Bill Martin and Jess Cochran gave of their brawn to support Wa-Hi on the gridiron, and Clayton Shaw and other juniors did their part on the basketball court.

The junior class had a goodly representation on the Scholarship roll by a large number of probable National Honor Society candidates.

The Class of '37 indeed feels that it has ended an interesting and worthwhile year.

JUNIOR OFFICERS

LaSalle LeRoux	President
Evelyn Moore	Vice President
Edna Quist	Secretary
Mrs. Dunn	Faculty Advisor

*Jobs of Names from here on,
 including Roberta
 & your sister
 "Bernie"*



First Row: Hauser, Hale, Gehrett, Hunn-
 nex, Harbert, Gordon, Garrett, Githens,
 Gottlieb.
 Second Row: Griesbaum, Griffiths, Cham-
 berlain, Gainer, Hearn, Gentry, Fogel,
 Harvey, Dysart.
 Third Row: Hartwig, Hastings, Hunting-
 ton, Fulton, Hoffman, Harold, Gard-
 man, Fogarty.
 Fourth Row: Hendrickson, Grange, Gen-
 try, Hammond, Grant, Henderson.



First Row: B. Lane, Lutton, Joslin, Jones,
 Loiseau, Kent, C. Loney, Land, Ken-
 ney, Johnson.
 Second Row: Jones, Ichikawa, L. Lane,
 Hemme'garn, Jacobs, Kruger, Krumbah,
 Kennedy, Krausher, Jamison.
 Third Row: Haney, Kleinbach, Kolb, Lloyd,
 Hunt, Jantz, D. Lewis, Lusk, Kersh, A.
 Loney.
 Fourth Row: Johnson, Levin, Lowery, Jed-
 in, LeRoux, M. Lewis.



First Row: McFadden, Merkle, McCarthy,
 Maxey, Mitchell, Mansfield, McGuire,
 Mead.
 Second Row: McCoy, Miller, E. Martin,
 E. Moore, M. Moore, B. Martin, Ows-
 ley, Oberholtzer.
 Third Row: Olsen, Peterson, McKinney,
 Miller, Plaquet, Onstot, Mulhair, Mul-
 key.



First Row: Skillin, Rice, Penner, Quist,
 Prutsman, F. Smith, Riggle, Simmonds,
 Rock.
 Second Row: Reid, Russell, Ramsay, Rob-
 inson, Schultz, Schiffner, Reynolds, Reim-
 che.
 Third Row: Schaefer, Robbins, Santo, F.
 Smith, Schwab, Reiter, Rogers.
 Fourth Row: Stewart, Shaw, A. Smith,
 Rea, Putman, Riggs.



First Row: Tempny, Struthers, Waters,
 Tarnasky, Shawe, Taylor, Wise, Trum-
 ble, West.
 Second Row: Williams: Stillwell, Walters,
 Thompson, L. Wiebe, Tate, Walker,
 Zier, Yeend.
 Third Row: VanDonge, Williamson, Thom-
 as, Yokom, Weaver, Woodward, Seitz,
 VanBuskirk, Weber.
 Fourth Row: Thompson, Spencer, Stead-
 man, D. Wiebe, K. Smith, Schaeffer.

First Row: Cline, U. Ary, Allard, Alexander, Burlingame, D. Adams, Brown, Benefiel, Buehler.
 Second Row: R. Ary, Brixey, M. Bowers, Collins, Anderson, Bemus, Crecelius, B. Coyle, Bishop.
 Third Row: Burnet, Bahnaman, A. Bowers, Bristol, Bailey, Barney, Benzel, R. Benefiel.
 Fourth Row: H. Adams, Bates, Cochran, J. Adams, Brumbach, Rastron, Clark.
 Fifth Row: Argo, A. Boldman, Bellows, Cunningham, Vogel, Bryant.



First Row: Foltz, G. Cox, Davis, Fulker son, Davison, Dull, Dagget, Engle Courtney, Eyraud, Gram.
 Second Row: Eiffert, J. Gordon, Flomer, Donley, D. Cox, Fazio, Eby, Claytor, F. Freeman, Dimick, Cladius.
 Third Row: K. Frazier, B. Freeman, Dunn Cornelius, Crawford, Dent, Drennan, Emerson, Duncan, Falbo.
 Fourth Row: Fuller, Craig, Everhart, Elliot, Hunt, Frank, C. Coyle, Damon
 Fifth Row: Duff, Franklin, DeLong, Dickey, Breeze.



THE SOPHOMORE CLASS

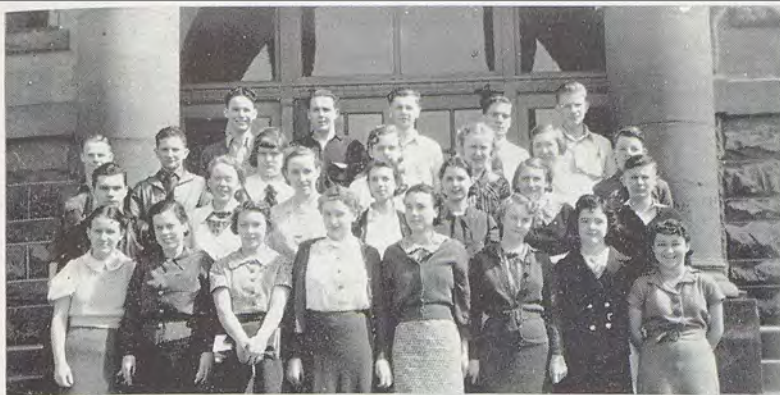
The sophomore class has just finished the second colorful year in highschool career. A large percentage of the sophomore boys have shown a great deal of enthusiasm for athletics and many turned out to participate in the field of sports.

The sophomores have the distinctive honor of having the most students represented on the scholarship roll at the close of the first semester.

The Class of '38 feels it has accomplished much during the first half of its high school course, and is looking forward to its upper-class years with the greatest enthusiasm and anticipation.

SOPHOMORE OFFICERS

Sherwood Palmer	President
Eldon Drennan	Vice President
Miriam Maier	Secretary
Miss Falk	Faculty Advisor



First Row: Gettman, Hunter, Hopper, Harvey, Gable, Haley, Gensel, Graham.
 Second Row: Gorman, Hanan, Hilbert, Gilliam, Hunt, Hartley, Gradwohl.
 Third Row: Hearst, Hart, Heibel, Herbert, Hinchcliffe, Haltgreve, Hughes.
 Fourth Row: Guenther, Mantz, Hawkins, Gogins, Holm.



First Row: Mack, McBroom, Manning, Kelso, McCarthy, Miller, Johnson, Kincaid, Kipp, B. L. Kennedy.
 Second Row: McCoy, Land, Lyday, Kilbourne, M. Kennedy, Ludwigs, Joslin, Moore, Meckler.
 Third Row: Isitt, McLachlan, McLeod, McNamara, Jauslin, McNichols, Jackson, McCoy, Knapp, Mosner.
 Fourth Row: Kenworthy, Ladd, McManus, King, Jeffery, Munson, Johnston.



First Row: McIntosh, Mardis, Melbye, Parsons, Rheberg, Ross, Perry, Porter, Reiter, Pittock.
 Second Row: G. Merry, Preas, Retzer, Pratt, Martin, Rittenhouse, Quesnell, Oliver, O'Brien, Reising, Robanskae.
 Third Row: Olson, Piper, M. Roberts, B. Roberts, Murphy, Maier, Reuble, Hart, Rimbey, Pfaffle.
 Fourth Row: F. Merry, McCarroll, Reed, Palmer, Ruff.



First Row: Schmidt, Sterling, Smith, Toner, Thomas, Skillin, S'oller.
 Second Row: Taylor, Swanson, Springer, Stahl, Trout, Rittenhouse, Tarwater.
 Third Row: Schneidmiller, Tash, Sanders, Smith, Reiber, Swauger.
 Fourth Row: Salmeier, Thompson, Storie, Simmonds, S. Schneidmiller.



First Row: Ward, Waggoner, Wagner, Walker, Watson, Weatherman, Wolfe, Wells, Whybark.
 Second Row: Zier, V. Waggoner, M. White, Weeber.
 Third Row: Webb, Walker, We'lls, Yeend.
 Fourth Row: Schubert, Witt, Schaetzel, Woolsey, Strode, Richard, Woiblet.
 Fifth Row: R. Wells, Whitely, Weaver, Whitehead.

First Row: Glaspey, Gross, Gradwohl, Gillock, Hilbert, Hamm, Hahn, Gilkerson, Gibbons, Harold, Cooper, Gray.
 Second Row: Harbert, Guy, Goefling, Feiwig, Franz, Harrison, Hamilton, Hays, Grego, Hyder, Garret, Harding.
 Third Row: Hastings, R. Herrin, Goff, Groff, Horton, Harris, Geist, C. Hill-
 yer, Holm, Holloway.
 Fourth Row: Hertzberg, Chet Hillyer, Gallagher, Grote, Horn, Hoffman, Hace, Hill.



First Row: Anderson, Banks, Clemenson, J. Aylsworth, Brock, A. Boldman, M. J. Aylward, Appling, Bean, Beatty, Campbell, Cochran.
 Second Row: Blomgren, Allesio, Beagi, Andrus, Betts, Cummins, Baker, Chandler, Cunningham, Bradfield, W. Aylward.
 Third Row: Boothby, J. Aylward, Allen, Bussell, Cockran, Ayde, Alla d, Bowers, Armstrong, Barclay.
 Fourth Row: Brown, Brower, Burton, E. Bates, Clark, Bradshaw, Bennehoff.
 Fifth Row: C. Bates, Bogel, J. Boldman, Collins.



First Row: Ferris, Davison, G. Dixon, Frieske, Evans, Driscoll, Dickerson, De-Boer, Froese, Fisher.
 Second Row: Franklin, Dammarell, Clemmens, Darnell, Ferguson, Czyhold, Dunning, Crego, J. Frank.
 Third Row: DeLong, Freepons, Fisher, Chambers, DeWitt, Deeter, Chisholm, G. Frank.
 Fourth Row: Erdman, P. Dixon, Coppel, Davis, Coleman, Erdsley, Davis, Con-
 nery, Fausti.
 Fifth Row: Frere, Fichtner, Rose, Estes, Dawson, Davis.



THE FRESHMAN CLASS

The freshman class has participated in many of the school activities and is looking forward to later years in Wa-Hi with the greatest of confidence and anticipation.

The Class of '39 represented itself in many sports, including basketball and football. The freshman homerooms took an active part in the Wa-Hi intra-mural tournaments.

There was a large number of freshmen on the scholarship roll, many being promising National Honor Society members.

The freshmen did their part in making the Wa-Hilarities of 1936 a success.

The Class of '39 wishes to express its appreciation to the teachers that helped them successfully through their first year in Wa-Hi.

FRESHMAN OFFICERS

Alan Romine	President
Harold Piper	Vice President
Wayne Berry	Secretary
Miss Draper	Faculty Advisor



First Row: Largent, Lamme ts, Hodgson, Harding, Hergirt, Holwager, Kindall, Keen, Kirkman, Jones, Hall.
 Second Row: Harris, Hamlin, Loney, Henderson, Johnston, Jesse, Lange, Johnson, Lambert, Kent, Kiehn, Kellian.
 Third Row: King, LeRue, Lapham, Jordan, Kidder, Kelty, Ireland, Lyford, Kelso.
 Fourth Row: Hunter, Keyes, J. Jilg, G. Jilg, Lewis, Jackson, Kirkman, Hooper.



First Row: Marsh, Matthews, Nelson, Mansfield, R. McCubbins, Musgrove, Marum, Miller, Preas, Mace, Kneu.
 Second Row: Miller, Mackie, Martin, Madison, Maxey, M. McCubbins, Marshall, Moody, Plaquet, Pont, Perkins.
 Third Row: Neslin, Mang, Mathes, Mortimer, Mercklen, Pemberton, Parkins, Peterson.
 Fourth Row: McMann, McDougall, Michaelis, Pierce, Maxson, Prince.



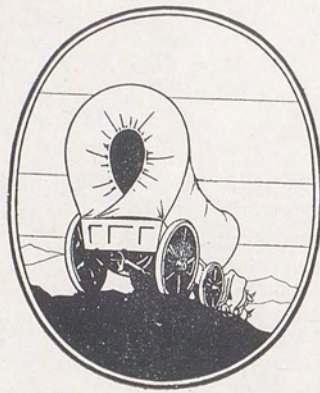
First Row: Swanson, Reed, Overby, Scott, Ruther, Opperman, Stone, Redfield, Salmeier, O'Connell, Olsen, Rehberg.
 Second Row: Owsley, Robinson, Rehorn, Reuble, Rhon, Oswald, Schreiner, Schaefer, Schmidt, Rose, R. Roberts, J. Roberts.
 Third Row: Reser, Reynolds, T. Rogers, Stutsman, Oliver, Schessler, Saunders, G. Romine, Sharp, Swant.
 Fourth Row: Fries, A. Romine, D. Rogers, Shearer.

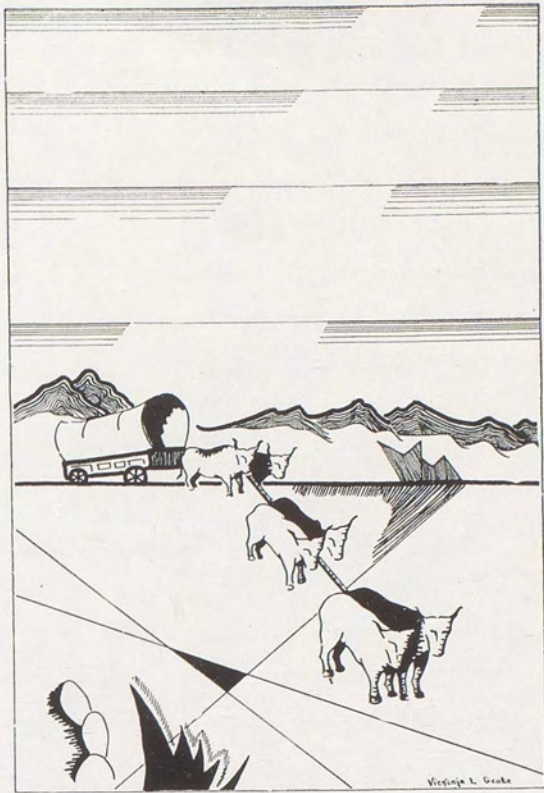


First Row: Tuke, Seibel, Spanish, Shelton, Seitz, Tomlinson, Vails, Wooten.
 Second Row: G. Wallace, Snyder, Van-Buskirk, Shinn, Santo, Timm, Wilson, D. Wallace, Siverling.
 Third Row: Smith, Veum, Stoller, Tillotson, Warner, Smart, Veder, Stewart.
 Fourth Row: Weston, Taylor, J. Shelton, Vigneron.



First Row: A. Zier, J. Wolfe, Yudovitch, Whittington, Wedge, Waterman, Wamble, Widener, Weathers.
 Second Row: Walters, Williby, Woodward, Williams, White, E. Zier, Williams, Woodroffe.
 Third Row: Webb, Wiebe, Weidert, Wietz, Warfield, Walton.
 Fourth Row: Yeend, W. Wilson, Wood, S. Wolfe.





ACTIVITIES

STUDENT GOVERNMENT

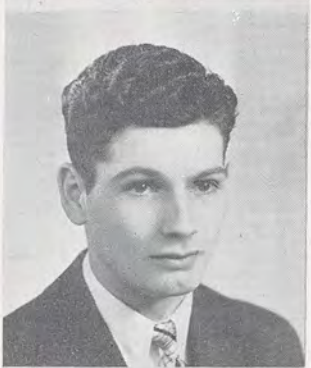
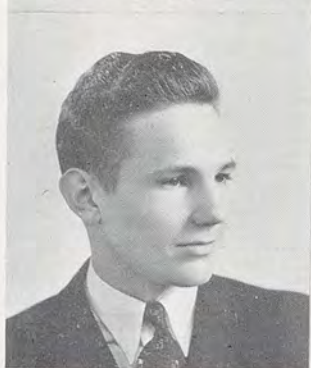
The twelve hundred and fifty students of Wa-Hi chose Mearle "Swede" Miller as their chief executive for the year 1935-36. Under his direction the Associated Students revived the "Royal Blue," discontinued since 1928, as an Associated Student project. With the help of his coworkers he maintained a high standard of student assemblies, fostered the amateur programs, conducted a successful spirit week, continued the publication of the Journal, and brought to the students such high class entertainment as the White Hussars.

Harry Zier, Vice-president; Paul Webb, Secretary, and Joe Colombo, Treasurer, were chosen to help the president direct student affairs, with the cooperation of the Cabinet, appointed by the president and ratified by the Legislative Assembly. The Cabinet was made up of the following commissioners: Justice, David McCarroll; Hallways, Carl Yocum; Assemblies, Betty Glafke; Buildings and Grounds, Don Rader; Stage, Milford Kellogg; Inter-School Relations, Bob Shaw; Social and Organizations, Bee Barrie; Finance, Dorothy Williams; Publicity, Dick Hendricks.

The Judicial Department, which tries cases of infringement of student rules and prescribes penalties for misdemeanors, was headed by David McCarroll as Chief Justice. Bernadine Rogers was the other senior member of the Court; Peggy Woodward and Floyd Levin, junior members; Bob Dunn and Jeanne Crawford, sophomore members; and Virginia Crecelius, freshman runner.

Progress in furthering the purpose of student government to train students for the future and give them opportunities to express their opinions and develop their talents was shown in the movement to grant freshman legislators an equal vote in the legislative assembly with other class representatives, two of whom are elected to represent each homeroom.

Wa-Hi's student body government has been a determining factor in the progress of the school this year as in past years. Each student has been given responsibilities which he must carry out himself, and each has cooperated to such an extent that our student government is an organization to which we may point with pride.

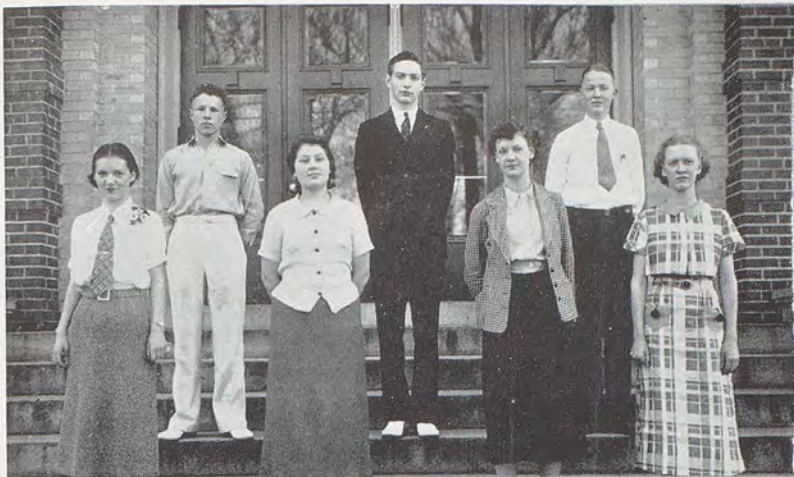


Miller

Webb

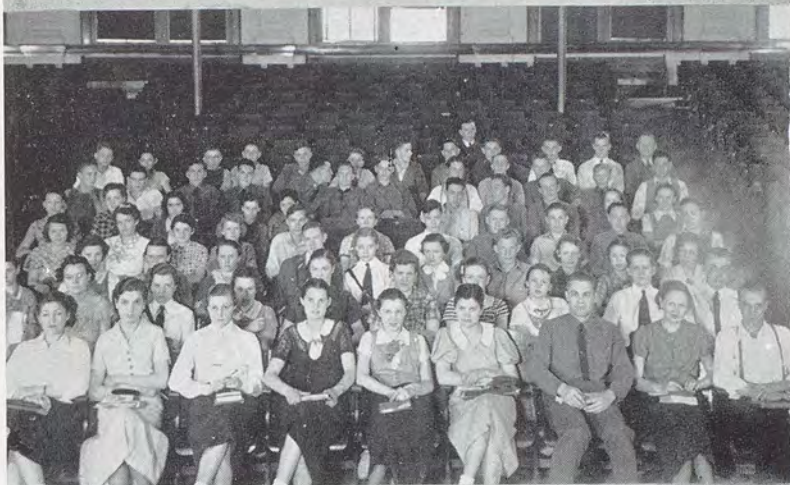
Zier

Colombo



COURT

First Row: Virginia Crecelius, Bernadine Rogers, Jeanne Crawford, Peggy Woodward.
 Second Row: Bob Dunn, David McCarroll, Floyd Levin.



LEGISLATIVE ASSEMBLY



CABINET

First Row: Milford Kellogg, Don Rader, Paul Webb, Dorothy Williams, Betty Glafke, Bee Barrie.
 Second Row: Harry Zier, Carl Yocum, Bob Shaw, David McCarroll, Joe Colombo, Mearle Miller, Dick Hendricks.

GIRLS' FEDERATION

COUNCIL—1st Semester

First Row: Doris Mae Adams, June Loney, Peggy Woodward, Jean Nascimento.

Second Row: Betty Rae Appling, Viola Jamison, Eunice Buddenhagen, Katherine Hanger, Betty Kirkman.



CABINET—1st Semester

First Row: Bee Barrie, Lois Shemwell, Betty Waldron, Jean Nascimento.

Second Row: Betty Flaiz, Patty Marum, Constance Bryant, Peggy Woodward, Edna Quist, June Loney, Carolyn Cromer, June Thompson.

Third Row: Martha Raugust, Joan Nelson, Gladys Lee, Alice Hair.



COUNCIL—2nd Semester

First Row: June Thompson, Martha Raugust, Betty Bishop, Patsy Thomas.

Second Row: Mary Webb, Marian Rae-horn, Mary Florence Bendix, Sophie Knapp, Virginia Crego.



CABINET—2nd Semester

First Row: Constance Bryant, Marilyn Maxey, Peggy Woodward, Margaret Garland, Bee Barrie, Alice Hair, Carolyn Cromer, Betty Flaiz.

Second Row: Ada Ichikawa, Jean Bybee, Helen Paquin, Betty Bishop, Jean Nascimento, Martha Raugust, Lois Lane, Edna Quist.

Third Row: Beth Lange, Mary Florence Bendix, Mary Robison, Maida Bellows, Jeanne Crawford, Betty Waldron.



GIRLS' FEDERATION

The year of 1935-1936 marks another successful period of Federation activity at Wa-Hi in accomplishment of the organization's threefold purpose of fostering good fellowship, encouraging wholesome school spirit, and serving the school and the community. The beginning of each semester saw the traditional Big and Little Sister party, causing flurries of worry, excitement, and enjoyment among both old and new girls. The unforgettable feature of the first semester's gathering in the gym was a carnival sideshow which included a great deal of upperclass talent in impersonations of Popeye, the Sailor Man, Siamese twins, and a red flannel fan dancer. The second semester's party was made merry with a novel skit produced by members of the dramatic committee.

The four Mother-Daughter teas sponsored by the organization did much to increase community interest in the Federation and in the school. These teas, which were given in the cafeteria, were occasions for a great deal of activity among the girls of each class, their mothers, and teachers. All concerned felt that the teas had done much to bring parents, teachers, and students together in a spirit of friendliness.

The monthly assemblies of the year provided much interest and entertainment. Outstanding among these was a play produced by the dramatics department and given on March 23. Reports from the Tri-State Conference meeting at Moscow High-school and from a smaller district conference at Prescott proved very interesting.

The Girls' Federation is the girls' organization. Though every girl in school cannot hold office, she can take part in the life of the Federation by offering suggestions, cooperating with the officers, and attending the Federation functions. The spirit of cooperation which determines the success of Girls' Federation activity during each successive year has been very evident during this school year of 1935-36 and has bound the girls into a relationship that will not soon be forgotten by those who leave Wa-Hi at graduation.

FEDERATION OFFICERS

1st Semester		2nd Semester
Betty Waldron President.....	Bee Barrie
Jean Nascimento Vice-President.....	Margaret Garland
Bee Barrie Secretary.....	Peggy Woodward
Lois Shemwell Treasurer.....	Alice Hair

First Row: McCoy, McCarthy, Bayne, Gilliam, W. Vollendorff, Rasmussen, Laurence Jacky, advisor.
 Second Row: Ladd, Colombo, Madison, Stewart, Schell, Chamberlain.



THE STAFF AT WORK



WA-HI JOURNAL

Through the school year of '35 and '36, the Wa-Hi Journal has, under the editorship of Robert Kenyon and the advisorship of Laurence Jacky, endeavored to present to the students a fair resume of activities about the school. The success of this purpose can be judged only by the reception of the publication by the students as something which was not perfect, but represented the effort and time of some twenty students and members of the faculty.

The first edition of the Wa-Hi Journal was released Tuesday morning, September 4, 1926. The paper was of the regular full size, containing four pages. The prosperity of the student body was evidenced in the fact that the copies were on sale at the rate of five cents per copy, or \$1.50 per year.

The paper was discontinued in June, 1932, because of the problem of financing it. The "Journal," however, became a campaign issue of student presidents, and finally, in 1935, Mr. Laurence Jacky organized night classes in the subject of journalism. In February, 1935, journalism became an accredited subject in Wa-Hi. The journalism class then set about the task of writing and editing the tabloid size Journal we now have. Every member of the Associated Students who has paid his dues receives a copy of the Journal.

Robert Kenyon was chosen editor for the semester ending February, 1936, and then was again selected to pilot the Journal through the remaining semester of the school year.

During the last year the Wa-Hi Journal staff has kept in mind its purpose of helping the student body by giving the news, encouraging student opinion, and developing a constructive editorial policy. The staff realizes that the material in the publication has been far from perfect, but wishes to thank the student body for bearing with it in the trials which were encountered, and it, in turn, accepts their comments and criticisms in the spirit in which they were meant, that of helpfulness and sportsmanship.

STAFF

Editor	Bob Kenyon	Business	John Crawford
Associate Editor	George Sutherland	Typists	Betty Bishop, Bud Dickerson
News Editor	Eugene Sharp	Advertising Editor	Chas. LaCure
Sports Editor	Dick Hendricks	Advertising Manager	Mildred Jessup
Society Editor	Pat Cowan	Faculty Advisor	Laurence Jacky
Humor	June Loney		



First Row: Armstrong, Barrie, McGuire, Russell, Waldron, Bishop, Lockhart, Ludwigs, G. McCoy, Miss Simet, advisor.
 Second Row: C. Matthews, Woodward, Nascimento, Wetherell, Quist, Nelson, Rulaford, Buddenhagen, Grote, Hair.
 Third Row: Roecker, Lawrence, Vollendorff, Levin, Ladd, Dickerson, Kellogg, Sharp
 Fourth Row: Yocum, Miller, R. McCoy, McCarroll, A. Matthews.



THE STAFF AT WORK

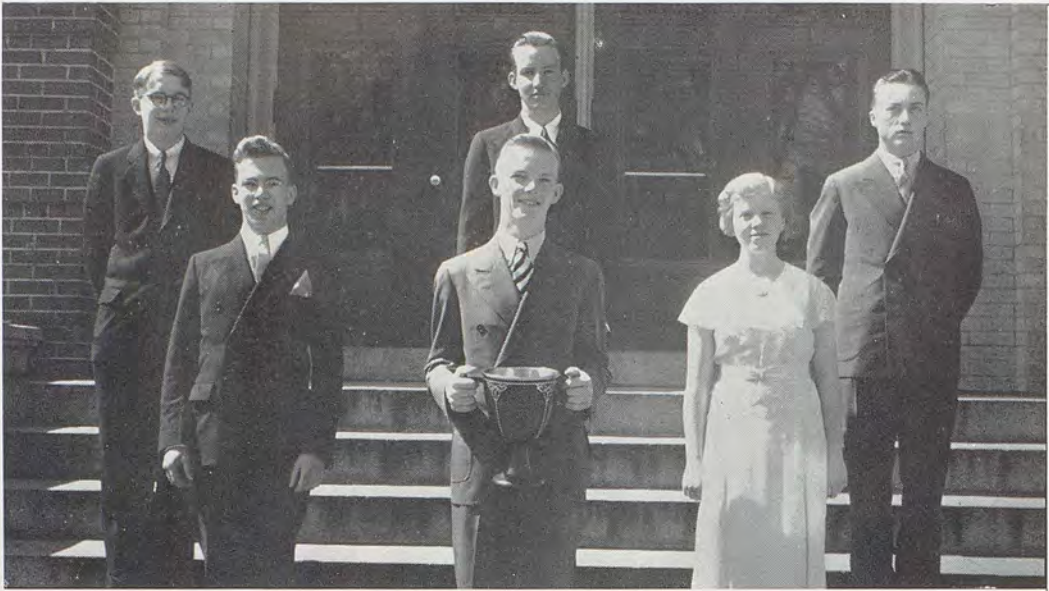
THE ROYAL BLUE

During the famous period of our history known as the covered wagon days, many left their homes in order to experiment with a new life in a new land. The annual staff for this 1936 edition of the Royal Blue has some of the same pioneering spirit that those early settlers had. For the past six years Wa-Hi has had no annual. Styles in annuals have changed since that time, just as styles in clothing change from year to year. With no recent issues to set a precedent, and no experienced workers on the staff, it has been the task of this year's staff to set a new precedent, make a new style, blaze a new trail, like the pioneers of old. The aim of the staff has been to publish the kind of an annual that will be such a treasure of highschool reminiscences that everyone will want the Royal Blue to again find its place in Wa-Hi's life and activities.

Every day Betty Waldron, David McCarroll, Milford Kellogg, Burnadette McGuire, Lois Armstrong, Robert McCoy, Joan Nelson, Avo Jane Wetherell, Dorothy Jean Ludwigs, and Allen Matthews have met with Miss Simet to work out the problems of planning the copy, preparing the dummy, and assembling the material for this book. Many others have contributed time and material in planning and executing the sales campaign, drawing the layout for the prints, writing the copy, proof-reading, and re-writing it.

ROYAL BLUE STAFF

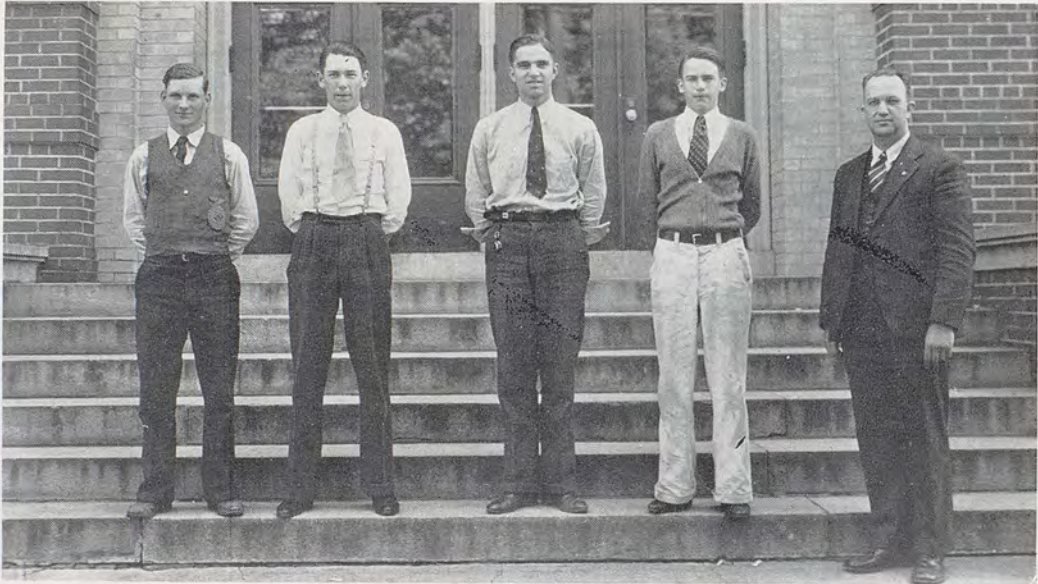
Editor	Betty Jean Waldron
Associate Editors	Burnadette McGuire, Lois Armstrong, Robert McCoy
Business Manager	David McCarroll
Assistant Business Manager	Milford Kellogg
Art Editors	Joan Nelson, Edna Quist
Assistant Art Editors	Ruth Russell, Virginia Grote
Class Editors.....	Betty Bishop, Bud Dickerson, Floyd Levin, Dorothy Jean Ludwigs, Clayton Matthews
Clubs	Avo Jane Wetherell, Allen Matthews
Military	Frederick Roecker, Jr.
Music and Dramatics	Peggy Woodward
Calendar	Eunice Buddenhagen
Sports	Gordon McCoy
Assistant Sports	Dick Hendricks, Fred Ladd
Organizations and Activities	Jean Nascimento, Bill Vollendorff, Eugene Sharp
Snapshots	Vernon Lawrence, Bee Barrie
Copy Readers	Alice Hair, Garnetha Rulaford



First Row: Applegate, Kenyon, Armstrong
 Second Row: Kennedy, Madison, Denton

EH-KAH-NAM CONTEST

Extemporaneous competition for the Eh-Kah-Nam cup was won by Bob Kenyon, who spoke on "Our Debt to Marcus Whitman." As winner of the contest, Bob Kenyon had his name engraved on the Eh-Kah-Nam cup and represented Wa-Hi at the Whitman College Extemporaneous Speaking contest, where he was again victorious.



Lusk, Duncan, Rea, Stamper, Mr. Lybecker, advisor

AGRICULTURAL AWARDS AND JUDGING TEAMS

The stock judging team, Stamper, Rea, and Lusk, won first place at the Walla Walla County Fair, and at the Columbia County Fair. At Pullman the team placed third, and at the Pacific International Livestock Contest in Portland the team placed seventh.

The potato judging team, Duncan, Rea, and Lusk, won for the second time the cup awarded by the Spokane Chamber of Commerce in a field of sixteen Washington and Idaho contesting teams.



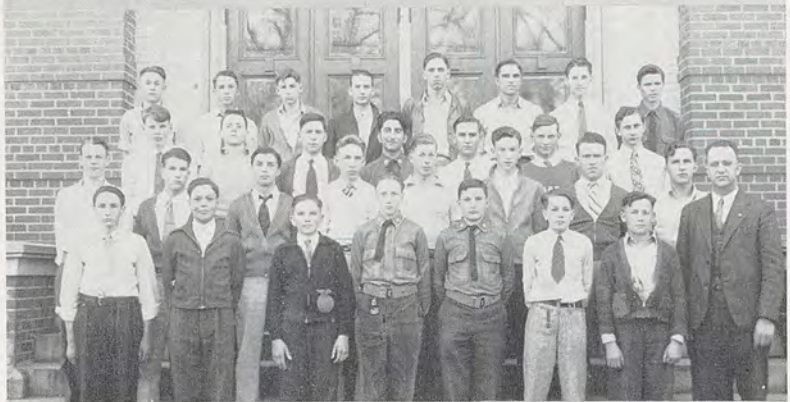
ARTS AND CRAFTS

First Row: Sams, Freepons, Davis, Miss Thun, advisor.
 Second Row: Kinney, Davis, Joslin, Weber, Hartshorn, Ringel.



F. F. A.

First Row: Fausti, Blomgren, Tuke, Eiffert, Merry, Rheburg, Shelton, Mr. Lybeck, advisor.
 Second Row: Hurst, Griesbaum, Conner, Maxson, Bahnaman, Warner, Evans, Loney.
 Third Row: Brown, Thomas, Hoffman, Ferris, P. Lusk, J. Lusk, Alderman.
 Fourth Row: Schaler, Haghman, Hopper, T. Rea, J. Rea, Steadman, Rittenhouse.



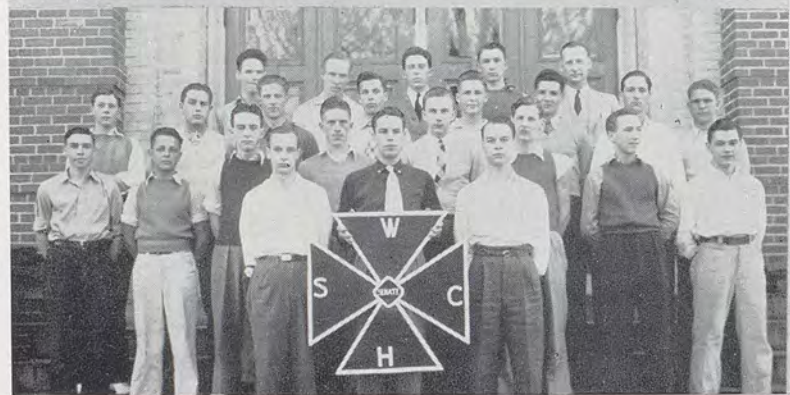
EL ADREA

First Row: Overby, Rogers, Montgomery, Quist.
 Second Row: West, Cram, Melbye, Davis, Crecelius, Lane, Githens, Struthers, Bryant, McGuire.
 Third Row: Bybee, Bowers, Raugust, Frazier, Knapp, Retzer, Adams, Loney.
 Fourth Row: Archer, Hair, Paquin, Coi, Garland, Anderson, Bemus, Collins, Jones.
 Fifth Row: Wetherell, Waldron, Harvey, Bendix, Rulaford, McNichols, Hanger, Miss McCormick, advisor.



SENATE

First Row: R. Vollendorff, Bonner, W. Vollendorff.
 Second Row: Dimick, Zier, Fogel, Bryant, Gayle, Seitz, Coyle, Gorman.
 Third Row: Kolb, Joslin, Colombo, McEvoy, Adams, Zier, Bergevin, Johnson.
 Fourth Row: Guenther, Tesch, Dacres, Gentry, Mr. Clark, advisor.





OFFICERS

First Row: Major Parsons, Major Roecker, Major Kelley.
 Second Row: Capt. Colombo, Capt. Miller, Capt. Owens, Capt. Bown, Capt. Frere, Capt. Woiblet.
 Third Row: Lt. Harding, Lt. Johnson, Lt. Cauvel, Lt. Kenny, Lt. Matthews, Lt. Goodman, Lt. Duff, Lt. Dickey, Lt. Paul, Lt. Buerstatte, Lt. Hendricks.
 Fourth Row: Lt. Daves, Lt. Kennedy, Lt. Haigh, Lt. Watson, Lt. Tempany, Lt. Stewart, Lt. Griffiths, Lt. Gwinn.



GIMMEL TETH

First Row: Lockhart, Crawford, Shemwell, Bowers.
 Second Row: Cowen, Cromer, Webb, N. Nascimento, J. Kennedy, Glafke, Gensel, Weatherman, B. Kennedy.
 Third Row: J. Thompson, Walker, Chamberlain, M. Kennedy, V. Harvey, P. Thompson, Maxey, Pratt.
 Fourth Row: Thomas, Grote, Davison, Ramsay, Woodward, Ludwigs, J. Harvey.
 Fifth Row: J. Nascimento, Robison, Lee, Nelson, Miss Garner, advisor.



EQUITES

First Row: Benefiel, Dickerson, Sutherland.
 Second Row: Livingood, Applegate, Harvey, Steele, Elliott, Griffiths, Walker, Clodius.
 Third Row: Roecker, Williamson, Jones, McKinney, Madison, Miss McIntyre, advisor.



NATIONAL HONOR SOCIETY

First Row: Katherine Frank, Ocea Jean Vedder, Faith Holderman, Sybil Clark, Helen Deeter, Eunice Buddenhagen, Marian Neiswanger, Alice Kendall, Constance Bryant.
 Second Row: John Cates, John Woiblet, Baker Kennedy, Alfred Middleton, David McCarrroll, Mearle Miller, Bob Kenyon.
 Third Row: Jimmie Pickard, John Haigh, Robert McCoy, Arthur Lathrop, Vernon Lawrence, Joe DeMaris.

GIRLS' CLASSICAL CLUB

First Row: Miss Lindner, advisor; Quesnell, Jacobs, Buddenhagen, Kincaid.
 Second Row: Flaiz, M. Simmonds, Schaub, Schultz, Ball, Howard, Davies.
 Third Row: Kent, Hilbert, DeSmet, Davis, Barbee, Dunwoodie, B. Simmonds.



DER LORELEI VEREIN

First Row: Bridgham, Frank, Martin.
 Second Row: Waggoner, Reising, Wise, Foltz.
 Third Row: Adams, Jedin, Paul, Miss Wasser, advisor.



L'ALLIANCE FRANCAISE

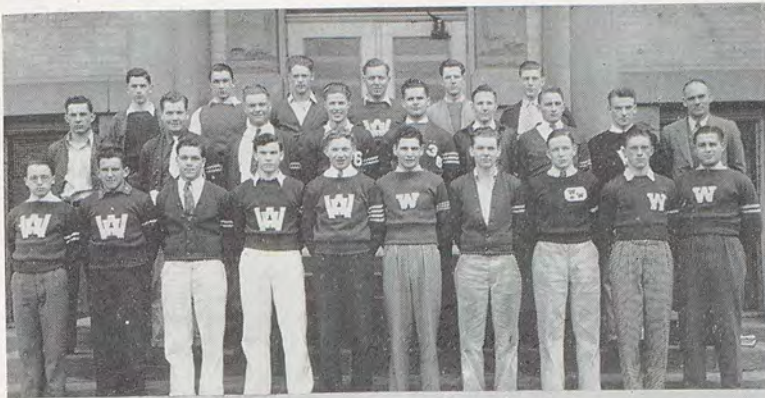
First Row: Deeter, Armstrong, Kendall.
 Second Row: Hungate, Eyraud, Dickerson, Alexander, Rutledge.
 Third Row: Mantes, Dryden, Vratos.



MATH CLUB

First Row: Vedder, Kennedy, Cauvel.
 Second Row: Gottlieb, Fuikerson, Buchanan, Roberts, Smith, White.
 Third Row: Mitchell, Watt, Krumbah, Holgreve, Hopper.
 Fourth Row: Woiblet, Talbot, Peterson, Putman, Lowery, White, G. McCoy.
 Fifth Row: Devine, Smith, R. McCoy, Haigh, Cornelius.





W. W. CLUB

First Row: Gensel, Knoble, Bishop, Cochran, Miller, Zier, Driftmeyer, Stewart, Bryant, Joslin.
 Second Row: Martin, Gwinn, Farrens, Colombo, Linker, Webb, Schaefer, McDaniels, Coach Dimick.
 Third Row: C. Shaw, Gentry, Onstot, Leone, B. Shaw, Smith.



SOCIAL SCIENCE

First Row: Webster, Neiswanger, Weaver, Swanson.
 Second Row: Graham, Merkle, Dickinson, Whittington, Lane, Ichikawa.
 Third Row: Miss Yeomans, advisor; Hunnax, Brennan, Jackson, Tillotson.



AVIATION CLUB

First Row: Kirsh, Simmons, Mulkey.
 Second Row: Smith, Ganders, Crimmins.



SCIENCE CLUB

First Row: Cates, Levin, Dunning.
 Second Row: Reid, Kenny, Hunt, Tate, Penner, Taylor.
 Third Row: Kellogg, Spencer, Bogart, Moore, Brown, Mrs. Kenyon, advisor.

CLUBS

Clubs have found a definite place in high-school life. Their benefit in developing social poise and responsibility has been recognized, so Wa-Hi has allotted 45 minutes of school time every two weeks for their meetings. Although the general purpose of all is similar, each has a different plan and aim.

The newly organized Arts and Crafts Club contributed constructive work by decorating the Home Relations rooms this year, thus providing a pleasant home atmosphere for the girls taking that course.

The Aviation Club, under the guidance of Captain Erickson, has made a name and place for itself in Wa-Hi activities. Its general purpose is to promote aviation, but it has done the definite work of assisting the Junior Chamber of Commerce in their annual air show, at which time the Club conducted a contest for model airplanes.

El Adrea did outstanding work to further the interest in social and educational development among its members.

Gimmel Teth has tried to promote friendship, school loyalty, and cooperation among its members. One of the highlights of the year was the annual spring dance, at which they were hostesses to high school pupils attending the State music meet April 24.

Equites, under the guidance of Miss McIntyre, has carried on a successful program for the boys interested in classical study; while the Girls' Classical Club, organized in 1933 under the direction of Miss Lindner, has sought to increase knowledge of classical subjects. It also helps to create a spirit of helpfulness and friendliness within the group.

L'Alliance Francaise has had a successful year in both its educational and social meetings. The regular meetings have been devoted to a study of the different provinces of France, comparing the native customs, dress, language, and social organization.

Lorelei Verein has done a great deal to build up an interest in Germany for those who belong. Besides its annual banquet, the club members keep scrapbooks of items of general interest concerning Germany.

The Future Farmers of America, once known as the Ag Club, is a national organization, and the only highschool club whose membership is open to freshmen. The reason for this is that honors in the F. F. A. are based on points which members start to accumulate in their Freshman year. During the last year the F. F. A. has conducted judging contests under the competent advisorship of Mr. Lybecker. This club has done much to promote more scientific farming and to make for better fellowship among its members.

The Math Club has shown its members how useful mathematics is in everyday life by having many educational meetings that centered around this interesting subject. One of the outstanding

events of the school year was the Christmas pageant sponsored by the Math Club, and written and directed by its advisor, Miss Blynn.

One of the most delightful social events of the year was the annual Barn Dance sponsored by the Senate Club. The Senators further distinguished themselves by winning the Ludwigs trophy in the annual float contest in the Wa-Hi Day parade, and added a little more to their glory by winning the prize in the ticket-selling contest for the district basketball tournament.

The Science Club, made up of people interested in new developments in science, has finished a very interesting and complete year, both educationally and socially.

The Social Science Club indulges in vicarious traveling by scheduling travel-talks at its meetings. This is an interesting and entertaining way of furthering its purpose of creating interest in and knowledge of the economic and social problems of the world of today.

The Officers' Club is an honorary club whose purpose is to bring about a thorough knowledge of military affairs. Officers of the R. O. T. C. are eligible.

The W. W. Club, an honorary club for lettermen, is true to its purpose in helping establish good sportsmanship and fellowship among its members and the student body. This year it put on three successful smokers, and has aided in regulating the conduct at games.

The roster of the National Honor Society reveals the names of many who have contributed generously to student life. Among these are Mearle Miller, president of the Associated Students and athlete of considerable attainment; Bob Kenyon, editor of the Wa-Hi Journal and winner of the Eh-Kah-Nam trophy; Betty Waldron, editor of the Royal Blue and president of the Girls' Federation; David McCarroll, Chief Justice of the Student Court and business manager for the Royal Blue.

One of the good student assemblies of the year was conducted by the National Honor Society, whose purpose is to foster not only good scholarship and student leadership, but also entertainment that has interest and cultural value.

Members not shown in the picture are: Betty Waldron, Alice Hair, Ilene Smootz, Jean Bybee, Melba Simmonds, Garnetha Rulaford, Buddy Roecker, Virginia Grote, Gerald Campbell, William Miller, John Lusk, Jean Nascimento, Charlene Jackson, Mildred Aylward, Gayle Madison, Dick Evans, Lyman Cauvel, Catherine Cates, Howard Henderson, Stuart Miller, Ethel Weaver, Peggy Woodward, Norma Ball, Betty Davis, and Marilyn Maxey. Most of these students were elected to the National Honor Society after the picture was taken.

The sixteen clubs have enrolled a large per cent of the students in Wa-Hi in their activities. It is felt that they contribute to the life of the members through creating social poise, and affording the opportunity for cooperation not found in other phases of school life.

SCHOOL CALENDAR 1935-1936

1935

SEPTEMBER—

3—One thousand three hundred of us return to varnished floors, doors, desks, and books once again.

OCTOBER—

3—Girls, new and old, dance and eat pop-cicles at "Big and Little Sister Party" in the gym.

10—Wa-Hi's first Radio-Pep Assembly is presented over K U J.

11—Pauline Prutsman represents "The Gay Nineties" in Pep Assembly.

NOVEMBER—

11—Armistice Day—single session.

14—Junior girls give "tea" for mothers and girls of Senior class. Pep Rally—floats 'n everything.

15—F. F. A. Fathers and Sons have banquet.

19—Brother, can you spare a nickel? Girls begin to sell Booster Tags to send the Band to Yakima on Thanksgiving Day.

21—Senior girls give "tea" for mothers and girls of Freshman class.

22—All-School Frolic.

26—Junior Chamber of Commerce entertains Football Boys at banquet.

27—Miss Cox's Dramatics Class presents Wa-Hi's first radio play over K U J.

28—Thanksgiving Day—No school!

DECEMBER—

5—Freshman girls give "tea" for mothers and girls of Sophomore class.

6—W. W. Club Benefit Smoker.

12—Sophomore girls give "tea" for mothers and girls of Junior class.

20—Christmas Pageant "The Cathedral Door" presented under direction of Miss Blynn and the Math Club.

21—Holidays begin!

25—Merry Christmas!

1936

JANUARY—

1—Happy New Year!

6—Back to school for another five months.

10—Pep Assembly.

13—Everyone goes around with sleeves rolled up after taking Manteaux skin test.

29 and 30—Semester Exams—more fun!

31—Teachers work while we worry(?)

FEBRUARY—

3—New semester begins—report cards.

4—W. W. Club Smoker.

7—Pep Assembly.

19—"Annual" Assembly features "Three Old Maids"—good.

MARCH—

11—Basketball boys are given a peppy send-off to Seattle in Pep Assembly. We hear the music go 'round an' 'round—Mr. Tilley's version.

12—"Big and Little Sister Party." We see Maida Bellows as Prince Charming.

16—Basketball boys are given a rousing welcome in morning Pep Assembly as they bring back fourth place in the State Tournament.

18—Wa-Hi presents its own Amateur Hour with Major Ted Applegate at the "mike."

20—Herbert Petrie and his White Hussars, in regal splendor, entertain the students at a one-hour assembly and are very well received.

25—We see (and hear) Virgil Stram and his Midsummer Night Dreamers in Assembly.

27—Wa-Hilarities of 1936 is a real success and brings a full house.

30—Spirit Week begins—Will you please sign? We are entertained by John Hertzberg and his Green Hussars.

31—Sophomore Day—Do we see yellow?

APRIL—

1—Juniors—what talent! Really this SO sudden! A Capella Choir from Cheney Normal entertains in an afternoon assembly.

2—Ah! The royal color and all that goes with it. Elva Chamberlain is crowned Queen of the Royal Blue at the big Spirit-Week Frolic.

7—National Honor Society presents its yearly assembly.

8, 9, 10—Spring Vacation!

14—Eh-Kah-Nam Contest is held—Bob Kenyon is proclaimed the winner, with Baker Kennedy placing second.

15—We are entertained in assembly by skits from the Senior Play.

17—The Senior Play, "The Queen's Husband" is successfully presented under the direction of Mrs. Marvin Minzel.

22—Another Amateur Quarter-Hour with the Major.

24 and 25—Student Convention at W. S. C.

29—Band entertains us in Assembly.

MAY—

2—Yakima-Wa-Hi Play Day is held here.

9—Sub-district Track Meet.

16—District Track Meet.

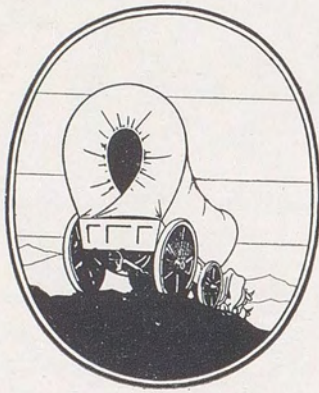
17—State Track Meet.

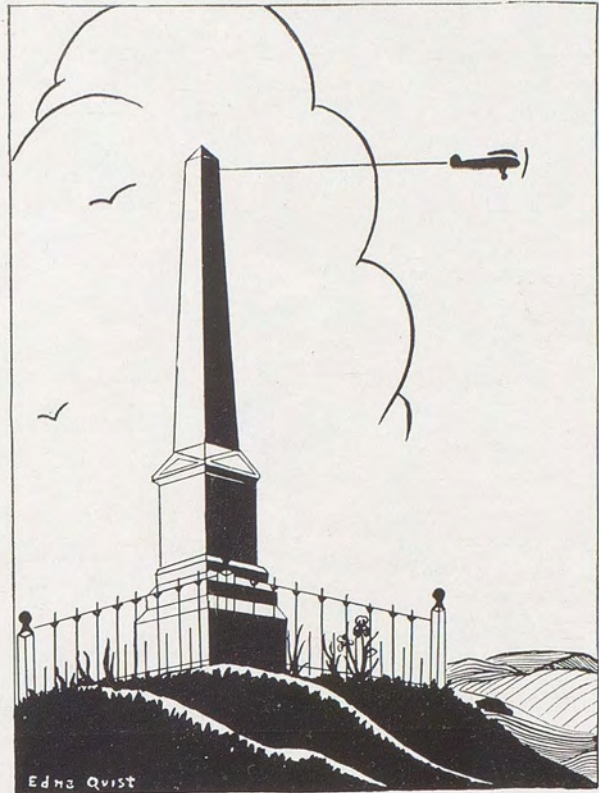
JUNE—

7—Baccalaureate.

11—Commencement.

12—We'll be seeing YOU.





MUSIC and DRAMA



THE QUEEN'S HUSBAND

King Eric VIII	Gayle Madison
Queen Martha	Bernadine Rogers
Princess Anne	Jean Bybee
Frederick Granton	Jim Pickard
Phipps	David McCarroll
General Northrup	Carl Yocum
Lord Birten	Bud Dickerson
Dr. Fellman	George Knapp
Prince William	Bill Vollendorff
Major Blent	Ted Applegate
Laker	Vernon Lawrence
Soldier	George Sutherland
Ladies-in-Waiting	Carolyn Cromer, Martha Raugust, Virginia Montgomery, Margaret Garland

"The Queen's Husband," Robert Emmett Sherwood's adaptation of the original professional production, was presented in excellent fashion by members of the senior class on Friday evening, April 17, under the direction of Mrs. Marvin Minzel. The background of the play is a mythical and anonymous kingdom, situated on an island in the North Sea, somewhere between Denmark and Scotland. The entire action takes place in King Erick's private office in the royal palace.

The story deals with the royal family of this mythical kingdom, a family composed of the domineering yet attractive queen, her henpecked husband, and their beautiful daughter, Princess Anne. Special honors went to Gayle Madison for his excellent and humorous portrayal of King Eric VIII, to Bernadine Rogers for her realistic characterization of Queen Martha, and to Jean Bybee for her appealing and understanding portrayal of the beautiful Princess Anne.

Outstanding as the princess' true love, Frederick Granton, was Jim Pickard, who turned in a polished performance as the lover fearful of losing Anne to Prince William, to whom she was engaged. Bill Vollendorff, David McCarroll, Carl Yocum, Vernon Lawrence, George Knapp, and the numerous others of the cast turned in excellent characterizations in their respective parts.

Special credit is due Joan Nelson, Milford Kellogg, and their assistants for their work in securing costumes, Alice Hair, Publicity Manager, Mr. Tack's stagecraft class for its handling of the stage, Baker Kennedy and John Haigh for their work on the property committee, and Miss Krueger, who had charge of the ticket sale. Helping to make the production a success was the orchestra, which provided music during the performance.

"The Queen's Husband" long will stand out as a memorable presentation of the class of 1936.



"WA-HILARITIES"

The most hilarious of the highschool productions for the school year of 1935-1936 was the Wa-Hilarities of 1936, which was presented Friday night, March 27, under the direction of Miss Virginia Idol. This year's production of the Wa-Hilarities was in the form of a typical Broadway revue and was acclaimed throughout the community as one of the most noteworthy productions of the high-school in recent years.

The hit act of the evening was the hay ride, the setting for which was laid "down South." The performances of Fred Owens as Sambo and Sherwood Palmer as Uncle Ned deserve special mention. The girls' trio, composed of Marian Taylor, Ruth Reiter, and Dorothy Whetsel, the members of the farmers' dance, the hayride dance, and chorus, turned in polished performances in this act.

Another highlight of the vaudeville was the beauty parlor sequence in which the hero turned the tables on his spry-stepping father with the aid of some beauty parlor operators—beautiful but dumb. Avo Jane Wetherell, Norene Slater, Don Rader, and Delbert Fiedler drew enthusiastic applause for their respective parts. Very effective also was the Dream Train act in which twenty girls gave a realistic portrayal of a train traveling at night.

"A Midsummer Night's Dream" was the greatest mirth-provoking act ever put on at Wa-Hi. The burlesque featured some of the most "graceful" male dancers in school. Virgil Stram as the Queen of Fairies showed exceptional talent as a ballet dancer.

Enough cannot be said of the work Miss Virginia Idol did as general director of the entire show. Because of Miss Idol's ability and experience, her clever ideas, and her untiring efforts, the Wa-Hilarities of 1936 was a successful and memorable production.

Numerous members of the faculty as well as of the student body helped in the presentation. Miss Mary Garner and Miss Dessie Cox assisted in the actual production, while Miss Helen McCormick advised the Business English 8 class, which was in charge of the advertising and salesmanship. Among the students who took part in the production were Bob Kenyon, who made an excellent figure as master of ceremonies, and Constance Bryant, Alberta Garret, and Betty Jean Gottlieb, who planned and coached some of the dance routines. Miss Helen Thun and the home economics classes were responsible for the attractive costumes used in the production. Mr. Tack and the stagecraft class furnished excellent handling of the stage and stage settings. Accompanists for the occasion were Jean Bybee, Mary White, Marilyn Maxey, and Peggy Woodward. The boys and girls in the attractive Wa-Hilarity orchestra added much to the program with their excellent playing.

ORCHESTRA

First Row: Campbell, Gensel, Fitzgerald, Davison, Quist, McNichols, Wue.d.er, Pratt, Ludwigs, Gibbons, B. L. Kennedy.
 Second Row: Hallmark, Chamberlain, Mullins, Drennan, Louis, Schell, Griffiths, B. Kennedy, Bemus, M. Walker, Mr. Tilley, director.
 Third Row: Haigh, Fogel, Moore, Stillwell, Olson, Welch, Crawford, Swauger, Chambers.



GIRLS' CHORUS

First Row: Miss Idol, director; Olson, Anderson, Reid, Hastings, Harold, Rose, Hilbert, Garrett, Reiter, MacIntosh, Preas, Gottlieb, Ringel.
 Second Row: Bybee, Neison, Evans, Whetzel, Mock, Merkle, Slater, Swauger, Thomas, Nascimento, Cromer, Barrie.
 Third Row: Gillock, Hunnex, Hamm, Chisholm, Binbandur, Sams, Josin, Taylor, Mills, Dunwoodie, Land.
 Fourth Row: Githens, Craft, Torrey, Walters, Loehr, Ring, Harvey, Kendall, Lane, Aylward.
 Fifth Row: Benzel, Elliott, Estes, Collo-way, Webster, Anderson, Cummins, Hayes, Curcio, Perkins.
 Sixth Row: Neison, Dumler, Horton, Smith, Freepons, Knauff, Wetherell, Waldron, Harvey, Davis, McNichols.



BOYS' CHORUS

First Row: Vivien Wooton, accompanist; Demaris, Rader, Schmidt, Kleinbach, Griffiths, Stillwell, Fuller, Fiedler, Miss Idol, director.
 Second Row: Dix, Merkle, Clark, Rogers, Anderson, Mace.
 Third Row: Benzel, Palmer, Knapp, McLeod, Levin, Robbins, Estes.
 Fourth Row: Evans, Bæhr, Lawrence, Tempany, Bachtold, Sutherland.
 Fifth Row: Spencer, Dacres, Owens, Jedin, Pickard.



MUSIC

Wa-Hi's school life would not be well rounded or complete without music, both instrumental and choral. As masters of medieval times realized the importance of music to the people of the world, so we, the students of Wa-Hi, realize the importance of music in our highschool curriculum.

The highschool orchestra, comprised of 35 members, practiced faithfully twice a week, and was richly rewarded by the appreciation shown by all who heard it at its concerts in the highschool auditorium. Their between-acts playing at the performance of "The Queen's Husband" and their part in "Wa-Hilarities" revealed a technique of which Wa-Hi may be justly proud.

The R. O. T. C. band under the direction of Mr. Tilley, is one of the school's most active organizations. Its 52 members practice three times a week. The military band is constantly in demand for civic as well as school entertainment. Besides playing at football games and for military drill, it plays at the County Fair, and for parades and conventions, and gives summer concerts in Pioneer Park. The Pep Band, composed of 18 selected musicians from the R. O. T. C. band, plays for the basketball games, per assemblies, and occasions which demand a smaller group than the military band.



BOYS' DOUBLE QUARTETTE

Stillwell, Griffiths, DeMaris, Tempany,
Knapp, Lawrence, Rogers, Anderson.



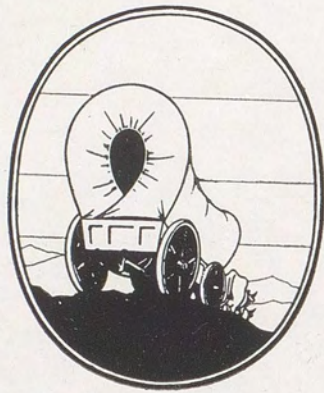
GIRLS' DOUBLE TRIO

First Row: Barrie, Reiter, Cromer.
Second Row: Woodward, accompanist;
Taylor, Raugust, Davis.

The girls' and boys' chorus groups, under the direction of Miss Idol, gave a number of pleasing performances at the highschool this year. They joined together to give a Christmas concert, and were important in the production of "Wa-Hilarities." At the pep assembly the day the team went to the Seattle tournament the boys' double quartette introduced a new pep song, written by Vernon Lawrence, and sung to a popular tune. The boys' double quartette is comprised of Keith Griffiths and Howard Stillwell, 1st tenors; Jack DeMaris and John Tempany, 2nd tenors; George Knapp and Vernon Lawrence, 1st basses; and Weldon Anderson and Dean Rogers, 2nd basses.

The girls' double trio has been greatly in demand for performances in assemblies, for the P. T. A., and for the spring Style Show. It is made up of Bee Barrie and Marian Taylor, 1st sopranos; Ruth Reiter and Carolyn Cromer, 2nd sopranos; and Martha Raugust and Betty Davis, altos.

Thus we can see what an important part music plays in the school life of Wa-Hi.





MILITARY

BAND

First Row: Lapham, Drennan, Griffiths, Fleming, Fuller, Stewart, Bowers, Lawrence, Isitt, Moore, Hallmark, Lewis, Mace, Davin.
Second Row: Mr. Tilley, director; Campbell, Welch, Bryant, Devine, Herrin, Chamberlain, Sutherland, Harbert, Hill, Stillwell, Olson.
Third Row: Freeman, Gradwohl, Fogel, Haigh, Kennedy, Stewart, Swauger, Chambers, Mace, Wolfe.
Fourth Row: Weston, Duncan, Goff, Holm, Daves.
Absentees: Crawford, Schell, Jones, DeMaris, Swant, Woodworth, Smith, Mullen.



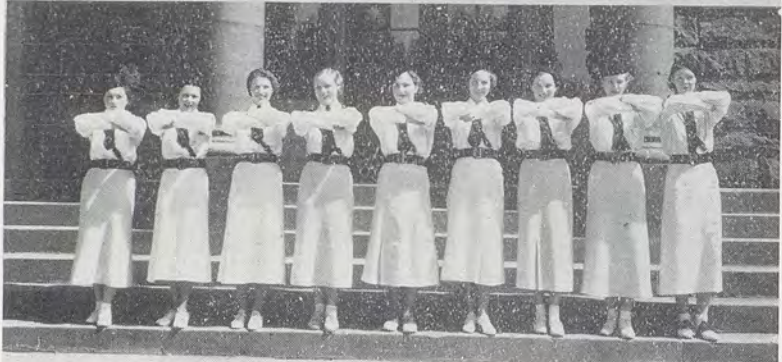
REGIMENTAL STAFF

First Row: Major Gene Parsons, Major Bud Roecker, Major Bud Kelly.
Second Row: Lt. Wayne Dickey, Lt. George Gwinn, Capt. Halford Miller, Capt. Joe Colombo, Lt. Harold Buerstatte.
Third Row: Sgt. George Knapp, Sgt. Harold Hammonds, Sgt. Dale Gentry, Corp. Carl Yocum, Corp. Norman Fulton.



SPONSORS

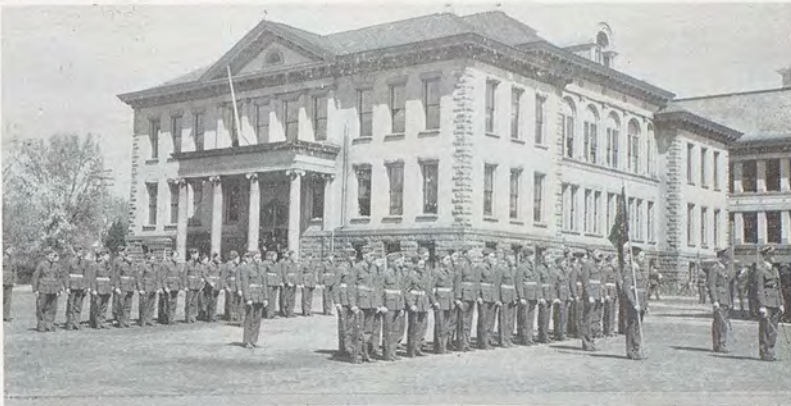
Lois Shemwell, Co. D; Bettye Rutledge, Battalion; Violet Emerson, Co. A; Juanita Bowers, Band; Martha Raugust, Regimental; Eunice Buddenhagen, Co. C; Mary Helen Bemus, Battalion; Betty Waldron, Co. B; Gladys Lucas, Staff.



RIFLE TEAM

First Row: Gwinn, Miller, Parsons, Matthews, Johnson, Cauvel, Harding.
Second Row: Madison, Gentry, Linker, Steadman, Mulkey, Hill, Davis.





COMPANY A



COMPANY B



COMPANY C



COMPANY D

MILITARY

The reserve Officers Training Corps at Walla Walla Highschool was officially recognized by the War Department in 1919, but it had been a voluntary unit for many years preceding this. In 1932 Captain Erickson became Professor of Military Science and Tactics, and in 1936 Sergeant Harold Mizony succeeded Sergeant Joseph Eversole as assistant instructor.

The Wa-Hi Cadet Corps is considered one of the outstanding units in the country, having been recognized as an honor school nine times since 1919. In 1935 it placed first among the 48 units in the Ninth Corps area. The cadet corps is made up into a provisional regiment consisting of two battalions of two companies each. There is a regimental commander and two battalion commanders in the unit who are senior officers of the regiment. Each company has its officers and non-commissioned officers. All instruction is designated by the War Department.

Each year in May there is held a Federal inspection, at which time an officer of the regular army is the inspector. He sends in his reports to the commanding officer of the Ninth Corps area, who picks ten high schools as honor units. At this inspection there is chosen the company which put on the best showing, and it receives the Kern trophy for its work. As this publication goes to press, the cadet corps is looking forward to the annual Federal inspection, and hopes again to place first in the area.

Friday is the day for the weekly parade, at which time the cadets turn out in full uniform.

Following the parade the cadets' appearance and the appearance of their equipment are thoroughly inspected.

On days such as Armistice Day, when the city holds a parade, the cadet corps participates and makes a very impressive appearance in the parade.

Every May, at the annual military tournament, the companies participate in a contest for competitive company close order drill, platoon close order drill, platoon extended order drill, and tent pitching. There is a trophy for the individual cadet who wins a competitive drill down in the manual of arms. All these awards are presented at a weekly parade held after the tournament.

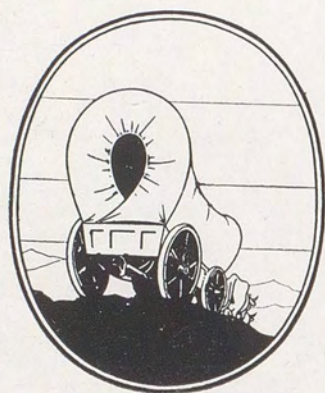
There are two other individual awards: First, the outstanding cadet award presented by the Reserve Officers Association to the cadet who is picked by the Federal inspector as the best cadet of the year, and, second, the outstanding officer award to the cadet who is picked by Captain Erickson as the outstanding officer for the year.

The last trophy is the one presented by Company F, Washington National Guard, to the company which is considered to be the best company for the year. All these awards are presented too late in the season for the results to be included in this story.

The Wa-Hi Cadet Corps has its unit rifle team, which consists of the fifteen best shots in the corps. This team participates in the Ninth Corps area matches, and individual matches with different schools. A five-man team is entered in the Hearst National match. If the team is among the ten high in the Ninth Corps area match, it participates in the National Inter-Collegiate match.

Every year each R. O. T. C. unit picks a girl from the school to act as its sponsor. The girls, uniformed in white and black, turn out for all the parades, and lend an attractive appearance to the unit.









COACHING STAFF

At the left is Ralph Emigh, assistant coach, who attended Wa-Hi and Whitman College, where his brawn earned him a position at guard on the football team. He now coaches the Wa-Hi Frosh in football and basketball. Next comes P. V. "Polly" Anderson, who also attended Whitman, where he played on the football and baseball teams. He was a varsity member of each team for four years and now, as a coach at Wa-Hi, he capably handles the "B" squad basketball team. Along with that he assists in the coaching of the football backfield. In the center sits head coach Harold Dimick. Coach Dimick derived his training from Willamette University, where he starred in football and basketball. Before taking his present position here, nine years ago, he was the head coach at Mac-Hi. Second from the right is Laurence Jacky, who won his laurels in football and track at Wa-Hi and at W. S. C. He now coaches the line in football and in addition coaches the track team. At the extreme right is Marvin Minzel, another W. S. C. man, who was an outstanding wrestler. He now holds the position of intra-mural coach.



FOOTBALL TEAM

Left to right—Front Row: Harry Benzel, Kenneth Fitcher, Kenneth Smith, William Gettmen, Robert Hirsch, John Gorman, Bill Martin, Earl Knob'e, Everett Schaeffe, Bernard Argo.
 Middle Row: Robert MacDaniel, William Stewart, William Ruther, James McKinney, Robert Joslin, Jess Cochran, Dean Van Donge, Paul Farrers, Eugene Cochran, Alexander Frank, David Wiebe.
 Top Row: Manager Gordon McCoy, Assistant Coach Laurence Jacky, Gordon Grange, Captain Melvin Grango, Dale Gentry, Swede Miller, Harry Linker, Joseph L'one, Ed Smith, Walt Onstot, Assistant Coach Paul Anderson, Head Coach Harold Dimick.



YELL STAFF

From Yell King Reuben Kleinbach down to diminutive Leland Swanson, the yell staff has proved itself an important factor in school life.

Under the guidance of "Polly" Anderson the staff has put on pep assemblies, backed school enterprises, and conducted radio programs in addition to leading yells at games and assemblies. Reading from left to right in the first row is Yell King Reuben Kleinbach, Leland Swanson, and Robert Reid. In the second row are Alan Romine, Cecil Johnson, Curtis Tarwater, Fred Swauger, and Coach "Polly" Anderson.

FOOTBALL

With five wins, four losses, and one tie game, the 1935 Blue Devil football squad went through a good season. The coaching staff, consisting of Harold Dimick, Laurence Jacky, Paul Anderson, and Ralph Emigh, with little seasoned material, built up a team that showed plenty of spark and was exceptionally hard to defeat.

September 21 marked the first appearance of the team, when they met La Grande at the local stadium. The Blue Devils were not threatened at any time, as along in the middle of the first quarter Bill Martin plunged across for the first score. After about four plays of the second quarter, Swede Miller galloped around end for 30 yards for the second tally. In the same frame Bill Martin again took the ball across the line. La Grande made its only score just before the end of the quarter. The Oregon team tried three forward passes with all of them being thrown to the ground by the alert Wa-Hi boys, but on the fourth, with a half minute to play, the La Grande quarterback, Inseth, sent one into the arms of a fellow player, who galloped across for their only score. In the fourth quarter a passing attack of the Blue Devils clicked, and with Grange and MacDaniels on the receiving end, they shoved over two more touchdowns. The final score was 31-7.

On September 27, the team played Wenatchæ, whom they defeated 14-0. The highlight of this game was the intercepting of a Wenatchee pass on Wa-Hi's 14-yard line and then running to Wenatchee's 6-yard line before being stopped. This run of Gentry's was too late to be of any assistance in that quarter. The gun ended the first period as he was tackled. Martin pushed the ball across immediately afterwards, in the second period. The second score came on a long pass from Grange to Gentry, who went over for the score.

The team journeyed to Everett on the following Saturday, where they were defeated by the large coast team 25-0. The boys were playing their first game under the stars, and the Sea Gulls proved to be too much for them.

McLaughlin High School of Milton came over to Walla Walla on October 11 and lost a hard game to Wa-Hi by a score of 7-6. Twice in the fourth quarter Mac-Hi pushed the ball over for a touchdown, but each time it was called back on a penalty. Wa-Hi made its score on a long pass over the goal line to Grange from Martin.

On October 18, Dayton and Wa-Hi fought a 7-7 tie on the Dayton field. Dayton made its score on an intercepted pass and carried the ball over for a touchdown, while Bill Martin bucked over Wa-Hi's only counter.

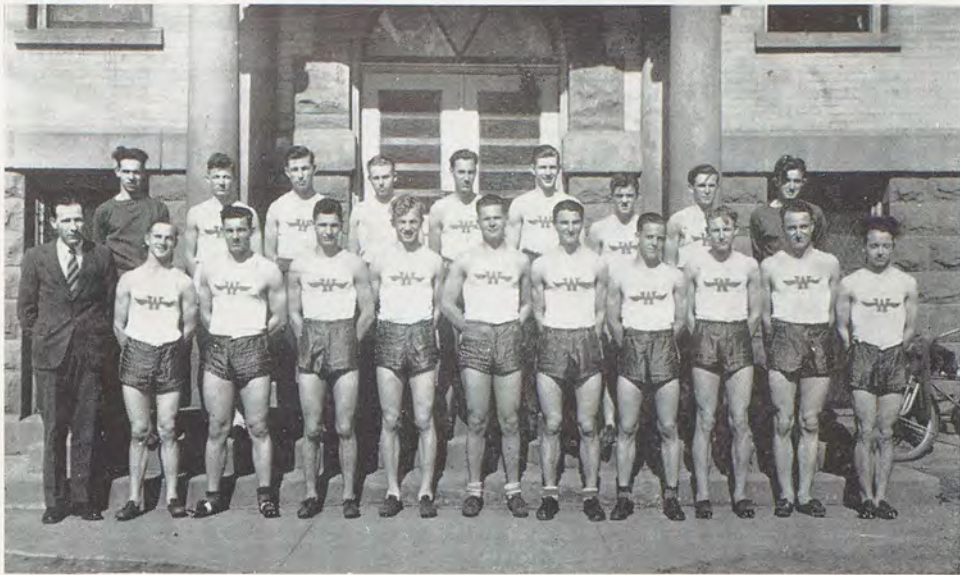
Pendleton handed the Blue Devils its second defeat as they trounced the team 20-6 at Pendleton October 21.

In the most hard-fought game of the season, the Blue Devils won over Lewiston, Arimstice Day, on their field, by a score of 14-12. Wa-Hi made both of its scores in the first half, and while Lewiston tried vainly to overcome the Blue Devils lead, fell short by two points, as both of their extra points were blocked by the sturdy Wa-Hi linesmen.

On October 15, The Dalles team completely smothered Wa-Hi with a passing attack that netted them plenty of ground. Wa-Hi made its only score in the second quarter, when Martin went across from the five-yard line. The score was 13-6 for The Dalles.

In the last tussle of the season, the traditional Thanksgiving Day contest at Yakima, the Blue Devils were handed their worst defeat of the year, when the Pirates rolled up a score of 31-7. Revenge must have been sweet for Yakima, still remembering the defeat here the previous year, and they played a truly great game.

We look forward to avenging some of these defeats with next season's squad.



Front Row—left to right: Coach Jacky, Chambers, Martin, Zier, Miller, Linker, Middleton, Hearst, Keyes, Pearson, Gensel.
 Back Row—left to right: Lawrence, Rogers, Allen, W. Frank, Benzel.

TRACK

With only three track men returning from last year's squad Coach Laurence Jacky had quite a task assembling a team. Some good prospects put in their appearance this spring, though, and as this article goes to press Wa-Hi hopes to capture some points at the annual track meet at Pullman, as well as at the Ritzville relays.

The dual meet between Mac-Hi and Wa-Hi at the Walla Walla stadium was dropped to Mac-Hi, but some satisfactory records were made by the local boys, and they bettered their record at the quadrangular meet at Pasco the following week by placing second, competing with Yakima, Sunnyside, and Pasco. Mearle "Swede" Miller broke the high jump record at this meet with a leap of five feet six and a half inches.

Billy Gensel, dash man, has yet to be defeated in the 220 this season. Harry Zier is making outstanding records on the 440 and 880, and James Pearson shows ability at the shot put and the javelin.

INTRAMURAL SPORTS

More interest was displayed in intra-mural sports this year than ever before, and the increased enthusiasm made it possible for Wa-Hi to defeat Yakima in the annual Play Day events by a score of $16\frac{1}{2}$ - $12\frac{1}{2}$.

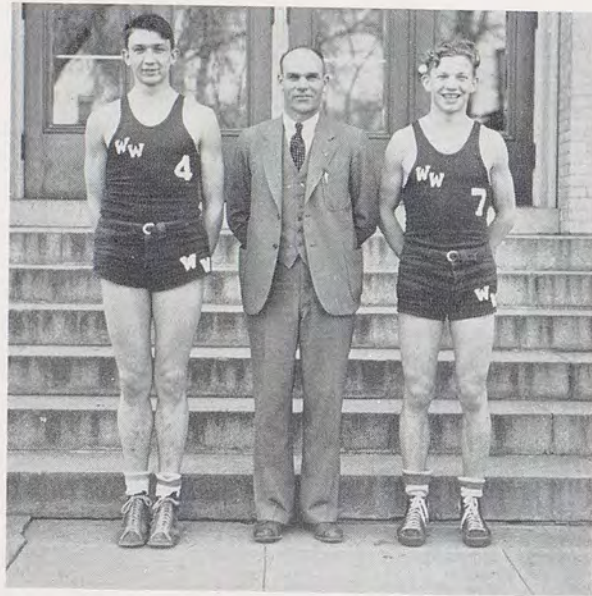
Touch football was the center of interest in the fall season and until snow covered the ground. Then intra-mural basketball was taken up, with a tournament between homerooms. All spring, before and after school, and during the noon hour, you could see boys scattered over the school grounds, playing horseshoes, softball, and volleyball. Golf and ping pong completed the list of sports.

This year a new plan was introduced to boost the school spirit for non-varsity athletics. Points are given homeroom teams for superiority in all sports, and an attractive banner is awarded the homeroom which has excelled in intra-mural competition during the year. Five points are given each homeroom team entering a tournament, five more for winning a tournament, three for second place, and one for third place. In the volleyball tourney one point was given for each game that was won. The felt was won by homeroom three with a total of 37 points.



BASKETBALL TEAM

Left to right—Front Row: Marlen Dimick, Manager Gordon McCoy, Donald Keyes, Harry Zier, Joe Bonner, Clayton Shaw, Billy Weber, Billy Zier.
 Second Row: Paul Yeend, Bob Allen, Paul Webb, Captain Merle Miller, Dale Gentry, Harley Smith, Wayne Berry, Harold Benzel.
 Third Row: Keith Griffith, Jimmy Seitz, Charles Weaver, Ralph Estes, Fred Onstot, John Adams, Warren Bischoff, Donald Brumback, Jack Jackson, Clarence Coyle, Coach Harold Dimick.



Dale Gentry Coach Dimick Merle Miller

ALL STATE

"All State" stars of this year's basketball squad were Dale Gentry and Captain "Swede" Miller. Gentry amassed a total of 367 points during the season of 32 games, was a state tournament player, and was chosen on every "All State" team that was picked. Miller, outstanding forward, won "All State" honors by being selected on the Associated Press team, and placed third in the scoring column with a total of 213 points.

BASKETBALL

Dec. 9	Wa-Hi.....	32	Pasco	17	Jan. 20	Wa-Hi.....	33	Mac-Hi	12
Dec. 14	Wa-Hi.....	31	Pomeroy	13	Jan. 24	Wa-Hi.....	35	Everett	27
Dec. 19	Wa-Hi.....	46	Lewiston	17	Jan. 25	Wa-Hi.....	35	Lewiston	16
Dec. 20	Wa-Hi.....	44	Clarkston	12	Feb. 7	Wa-Hi.....	46	Prescott	26
Dec. 21	Wa-Hi.....	36	Pomeroy	13	Feb. 8	Wa-Hi.....	50	Dayton	34
Dec. 23	Wa-Hi.....	28	Dayton	14	Feb. 11	Wa-Hi.....	38	Mac-Hi	23
Dec. 27	Wa-Hi.....	33	Yakima	24	Feb. 12	Wa-Hi.....	74	Connell	12
Dec. 28	Wa-Hi.....	36	Ellensburg	14	Feb. 29	Wa-Hi.....	44	Pomeroy	17
Dec. 31	Wa-Hi.....	55	Pasco	4	Feb. 29	Wa-Hi.....	54	Dayton	23
Jan. 3	Wa-Hi.....	63	La Grande	11	Mar. 7	Wa-Hi.....	48	Johnson	14
Jan. 7	Wa-Hi.....	43	Prescott	16	Mar. 7	Wa-Hi.....	63	Dayton	23
Jan. 10	Wa-Hi.....	42	Wash-Hi	20	Mar. 12	Wa-Hi.....	51	W. Valley	17
Jan. 11	Wa-Hi.....	46	Clarkston	15	Mar. 13	Wa-Hi.....	33	Valley	34
Jan. 17	Wa-Hi.....	38	Yakima	25	Mar. 13	Wa-Hi.....	51	Raymond	21
Jan. 18	Wa-Hi.....	47	La Grande	12	Mar. 14	Wa-Hi.....	44	Anacortes	22

Although the 1935-36 basketball team ended in fourth place in the state tournament, the squad was one of the most outstanding to ever represent Wa-Hi. At the beginning of the season the team was an unknown quantity, with only three veterans returning from last year's squad. Their first two games of the season were won by unimpressive scores, but after these their defense tightened and their offense developed into one of the fastest breaking plays known to basketball history at Wa-Hi. Their best defensive strength was flashed when they held Pasco to 4 points while they gathered 55, and their offense clicked most smoothly against Connell when they threw 74 points through the hoop. This power was displayed all through the year, with the result that they won all of their games on the regular schedule. With this undefeated record, they entered the state tournament, where, in their second game, the inspired Valley quintet, later to become the state champs, defeated them by the slim margin of one point. After this defeat the squad went to work and set a team scoring record at the tournament of 179 points. This team with such an enviable record consisted of: Captain Mearle Miller, forward; Harry Zier, forward; Dale Gentry, center and guard; Harley Smith, guard; Paul Webb, guard; Clayton Shaw, forward; Fred Onstot, center; and Billy Weber, guard.

The players who are too small or inexperienced to make the varsity, compose what is known as the "B" squad. This team went sailing through a very successful season, suffering defeat at the hands of only two schools, Columbia High and Prescott. The squad, composed of Jimmy Seitz, Keith Griffiths, Charles Weaver, Donald Brumback, Robert Hirsch, and Kenneth Fichtner, in addition to having its own schedule, furnishes competition for scrimmage with the varsity.

Perhaps one of the best midget teams in the state is that which was produced this year at Wa-Hi. Although all of the players are under five feet six inches, they form one of the fastest, smoothest-working clubs ever to perform on the maple court. Playing opponents who invariably were much taller than the midgets, they lost only four games throughout the season. The boys playing on this team were: Paul Yeend, Billie Zier, Marlen Dimick, Harold Benzel, Clarence Coyle, and Solomon Frank.

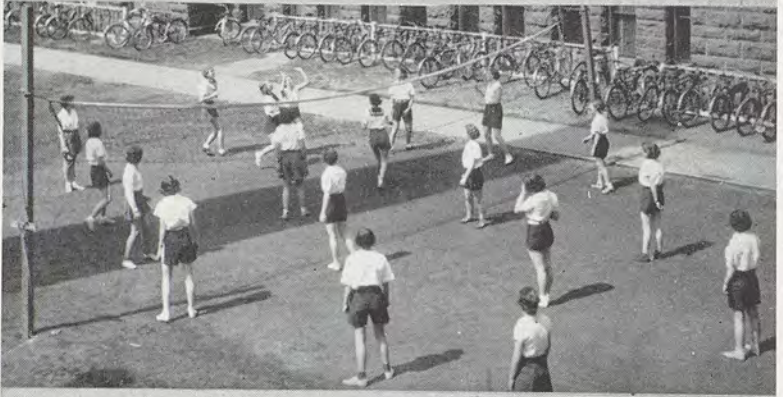
The freshman aspirants to the basketball team were divided into two squads, known as the first and second juniors. Wayne Berry, Donald Keyes, Warren Bischoff, Jack Jackson, Ralph Estes, Billy Pemberton, and Bob Allen played for the first juniors, which was usually more than the equal to the squads produced by the smaller high schools in this vicinity. The second junior outfit claimed Bobby Kirkman, and Sam Schneidmiller as members.

With these five teams representing Wa-Hi in a very excellent manner, it might well be said that the 1935-36 basketball season has been one of the best years for basketball at Wa-Hi since the sport began at this school.

FIELD BALL



VOLLEY BALL



ARCHERY



TUMBLING



GIRLS' PHYSICAL EDUCATION

In Wa-Hi, this year marks the beginning of an enthusiastic girls' sport program. Interest ran very high among the freshman girls in their sports and physical education. An upperclass basketball team vied with the freshman physical education class teams for honors in girls' basketball. The aim of girls' athletics is not inter-school competition, but rather a program in which all girls may take part.

For the first time in Wa-Hi, homeroom teams were organized for competition in both volleyball and baseball. In all, sixteen homerooms were represented.

During the school year, the following intra-mural program was offered after school hours to the Wa-Hi girls:

In the fall a series of volleyball games were held with several class teams in competition, and in the spring a homeroom volleyball tournament was conducted with sixteen teams competing.

Basketball was offered during the winter months, and over fifty girls participated. A great deal of interest was shown among the freshman girls. Teams were selected from physical education classes, and their teams played in contests after school.

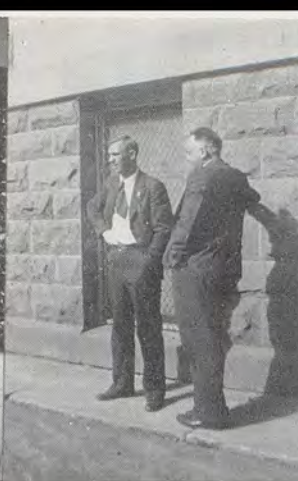
Tumbling was added to the intra-mural schedule, and it is hoped that another year there will be sufficient interest to start a girls' tumbling team.

Softball clubs were formed, and a number of girls participated.

A singles and doubles badminton contest was held and over thirty girls took part.

Over twelve girls plan to play in the tennis tournament and compete for the girl's tennis cup donated last year by the General Athletic Fund. As this article goes to press, it seems likely that there will be considerable competition, with the chief interest centering around Florence Letterer, Champion in 1934, and Hazel Shephard, newcomer from Klamath Falls.

The archery class for upperclass girls is the object of considerable interest not only for the girl archers, but also for passers-by and groups of student admirers of the ancient sport.



AUTOGRAPHS

AUTOGRAPHS

AUTOGRAPHS

AUTOGRAPHS

